

Gladstone Drive, Hereford

Guide Price £230,000

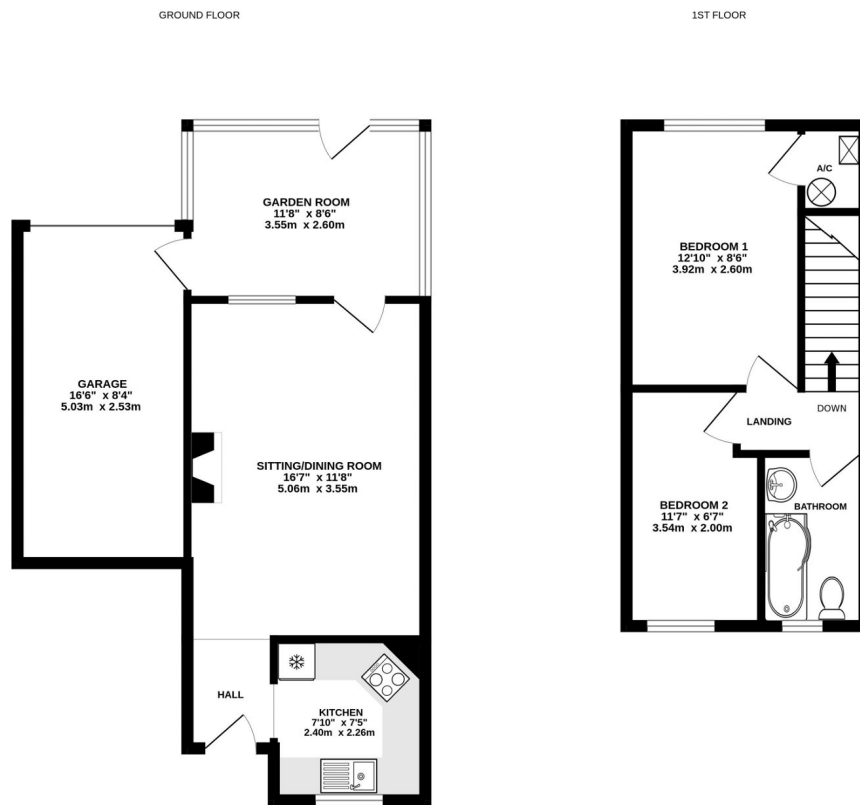
🛏️ 2 🚿 1 🚗 2



A Well Presented 2 Bedroom End Terrace House, including walled garden, driveway and integral garage, all situated near the City Centre of Hereford, Offered With No Onward Chain.

Key Features

- Integral Garage
- Low Maintenance Garden
- City Centre Location
- Garden Room
- Quiet Cul-De-Sac
- Private Driveway
- Offered With No Onward Chain
- 2 Double Bedrooms
- Well Presented Throughout
- Large Sitting Room



TOTAL FLOOR AREA : 789 sq.ft. (73.3 sq.m.) approx.

Whilst every attempt has been made to ensure the accuracy of the floorplan contained here, measurements of doors, windows, rooms and any other items are approximate and no responsibility is taken for any error, omission or mis-statement. This plan is for illustrative purposes only and should be used as such by any prospective purchaser. The services, systems and appliances shown have not been tested and no guarantee as to their operability or efficiency can be given.
Made with Metropix ©2024