



SAVILLE

Towers Avenue, Maghull

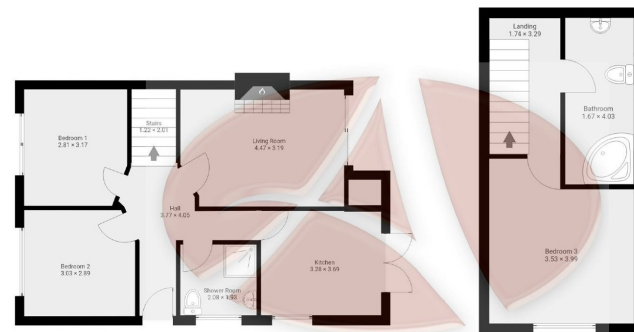
£249,950

3 2 1



- Semi Detached Dormer Bungalow
- Modern Kitchen With Integrated Appliances
- Spacious, Versatile Accommodation
- Driveway And Garage
- EPC Rating- D
- Three Bedrooms
- Bathroom And Shower Room
- Private Enclosed Gardens To The Rear
- No Onward Chain
- Council Tax Band- C





Ground Floor area approx area - 54.5m²

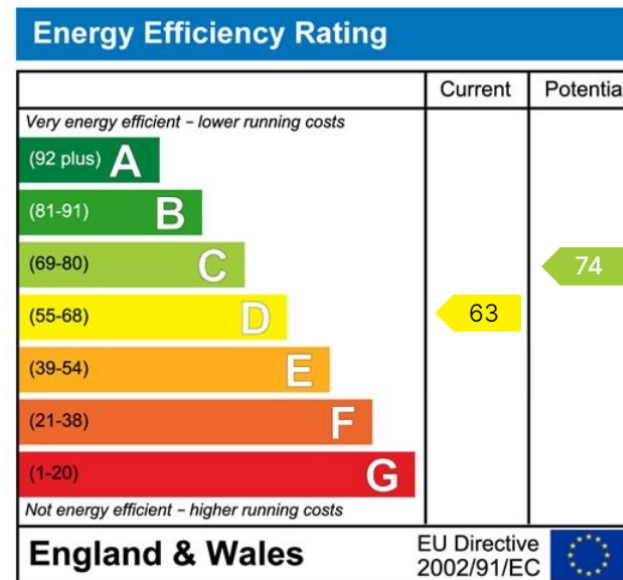
1st Floor area approx - 25.2m²

32 Towers Avenue, L31 0AJ

Whilst every effort is made to accurately reproduce these floor plans, measurements are approximate, not to scale and for illustrative purposes only. Measurements, floor areas, openings and orientations are approximate. They should not form any part of an agreement. No liability is taken for any error or mis-statement. All parties must rely on their own inspections.

SEMI DETACHED EXTENDED DORMER BUNGALOW, THREE BEDROOMS (ONE TO THE FIRST FLOOR), BATHROOM AND SHOWER ROOM, MODERN KITCHEN WITH INTEGRATED APPLIANCES, LOVELY LOUNGE WITH FRENCH DOORS TO THE GARDEN, OFF ROAD PARKING, GARAGE AND ENCLOSED REAR GARDENS. NO ONWARD CHAIN- BE QUICK!

This semi detached dormer bungalow sits in the ever popular location of Towers Avenue. Having been extended, the property enjoys versatile, spacious accommodation that offers flexible living. The accommodation currently comprises entrance hallway, dining room/ bedroom three, shower room, kitchen, lounge and a large double bedroom to the ground floor. To the first floor is a further large double bedroom and a bathroom. Externally there is off road parking for a number of cars, a garage and lovely enclosed gardens to the rear which enjoy a good degree of privacy. Viewing is a must on this one - be quick!



Alastair Saville Estate Agents
 25 Central Square • Maghull • Liverpool • L31 0AE
 138 Ormskirk Road • Old Roan • Liverpool • L10 3JG
 Tel: 0151 520 0001 • Website: www.alastairsaville.com
 Email: sales@alastairsaville.com • lettings@alastairsaville.com

