



2 SPRING PARK, WOOLWELL, PLYMOUTH, PL6 7SL

Offers Over £300,000

OFFICE ADDRESS: Woolwell Crescent, Plymouth, Devon, PL6 7RB TEL: 01752 791333

WOOLWELL

Woolwell is a suburb, four miles north from the city of Plymouth, located just outside the city boundary in the district of South Hams with excellent access to Plymbridge Woods and Dartmoor National Park. The area boasts an excellent Primary School, two day-nurseries, a Medical Centre and a Community Centre, which has many function rooms, a small café and is at the heart of the community, holding various events throughout the year. There is also a small complex of six retail outlets, containing takeaway restaurants and a hairdresser. A large Tesco Extra store is situated on the western boundary of Woolwell, with a recently built Lidl store opposite. There are three playgrounds situated within Woolwell, which are an asset to the local families with children, as is the local Scout group. There is a regular bus service, in addition to a very useful park and ride located half a mile away with direct links to Derriford Hospital (located Approx. 1.5 miles away) and Plymouth city centre. Within a few minutes' drive are; Dartmoor National Park, Yelverton Golf Club and Buckland Abbey, the historic home of Sir Francis Drake.

A spacious three bedroom detached bungalow occupying a well maintained corner plot, enjoying distance views towards Dartmoor whilst offering easy access to a host of local amenities. The living accommodation which is well presented throughout in tasteful and neutral colours comprises, entrance hall with built in storage, lounge and dining room with recently fitted carpets, fitted kitchen a modern family bathroom and three bedrooms, bedroom one has the benefit of an en-suite shower room and built in wardrobes.

Externally, the property stands on a well maintained corner plot which leads to a good sized garage and driveway. The property also benefits from PVCu double glazing and gas central heating. An internal viewing is highly recommended to truly appreciate this wonderful home.

LIVING ACCOMONDATION

Approached by a PVCu double glazed front door to:

ENTRANCE HALL

Access to loft, two built in storage cupboards, doors to

LOUNGE

PVCu double glazed sliding patio doors leading to the raised decking area, fire recess with wooden mantel over, access to:

DINING ROOM

PVCu double glazed window to the rear enjoying moorland views, radiator.

KITCHEN/BREAKFAST ROOM

Roll edge work surfaces with cupboard and drawers under and matching wall units, single drainer and one and a half bowl sink unit with mixer tap, built in electric oven and four ring gas hob, plumbing for washing machine and dishwasher, radiator, PVCu double glazed window and door to side.





BEDROOM 1

PVCu double glazed window to the side, built in wardrobes with sliding mirrored doors. Door to:

ENSUITE SHOWER ROOM

Tiled shower cubicle with inset shower, low level WC, pedestal wash hand basin, shaver socket and light, radiator, PVCu frosted window to the rear.

BEDROOM 2

PVCu double glazed bay window to the side, radiator.

BEDROOM 3

PVCu double glazed window to the front, radiator.

BATHROOM

Modern matching suite comprising; panelled bath with rain head shower over, low level WC, wash hand basin with storage beneath, part tiled walls, extractor fan, heated towel rail.

EXTERNALLY

The property stands on a generous corner plot, to the front and side there is a lawned garden. To the rear there is an enclosed raised timber decking area giving access to a side patio with steps leading down to a level lawned garden which is enclosed by fence boundaries.

From the garden, there is access to the garage.

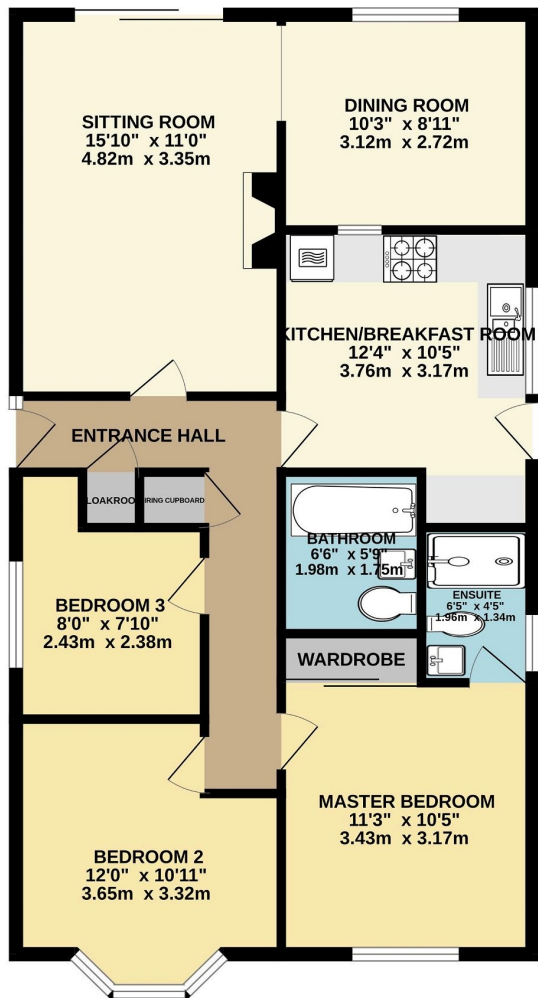
GARAGE

Up and over door, power and light connected. Driveway providing parking for one vehicle is immediately to the front.





GROUND FLOOR



Whilst every attempt has been made to ensure the accuracy of the floorplan contained here, measurements of doors, windows, rooms and any other items are approximate and no responsibility is taken for any error, omission or mis-statement. This plan is for illustrative purposes only and should be used as such by any prospective purchaser. The services, systems and appliances shown have not been tested and no guarantee as to their operability or efficiency can be given.
Made with Metropix ©2024

SERVICES

Mains water, gas, electricity and mains drainage.

VIEWING

By appointment with LAWSON.

OUTGOINGS

We understand the property is in band 'D-' for council tax purposes and the amount payable for the year 2024/2025 is £2,260.50(by Internet enquiry with South Hams District Council). These details are subject to change.

STRICTLY BY APPOINTMENT ONLY

FLOOR PLANS & ENERGY PERFORMANCE CERTIFICATES

These Floorplans are set out as a guideline only and should not be relied upon as a representation of fact. They are intended for information purposes only and are not to scale. Energy Performance Certificates are produced by an external source and Lawson do not accept responsibility for their accuracy. Copyright Lawson 2024

Lawson themselves on behalf for the sellers/landlords of this property whose agents they are given notice that :- (1) These particulars are set out as a general outline for the guidance of prospective buyers/tenants and shall not form the whole or any part of a contract. (2) All descriptions, dimensions and areas, references to condition and necessary permissions for use and occupation and other details are given in good faith and believed to be materially correct but any intending buyer/tenant should not rely on them as statements or representations of fact but must satisfy themselves by inspection or otherwise as to the correctness of each of them. (3) No person in the employ of Lawson has any authority to make or give any representation or warranty at all about the property. (4) No responsibility can be accepted for any expenses incurred by a prospective buyer/tenant in inspecting this property if it is sold, let or

