

Welcome to

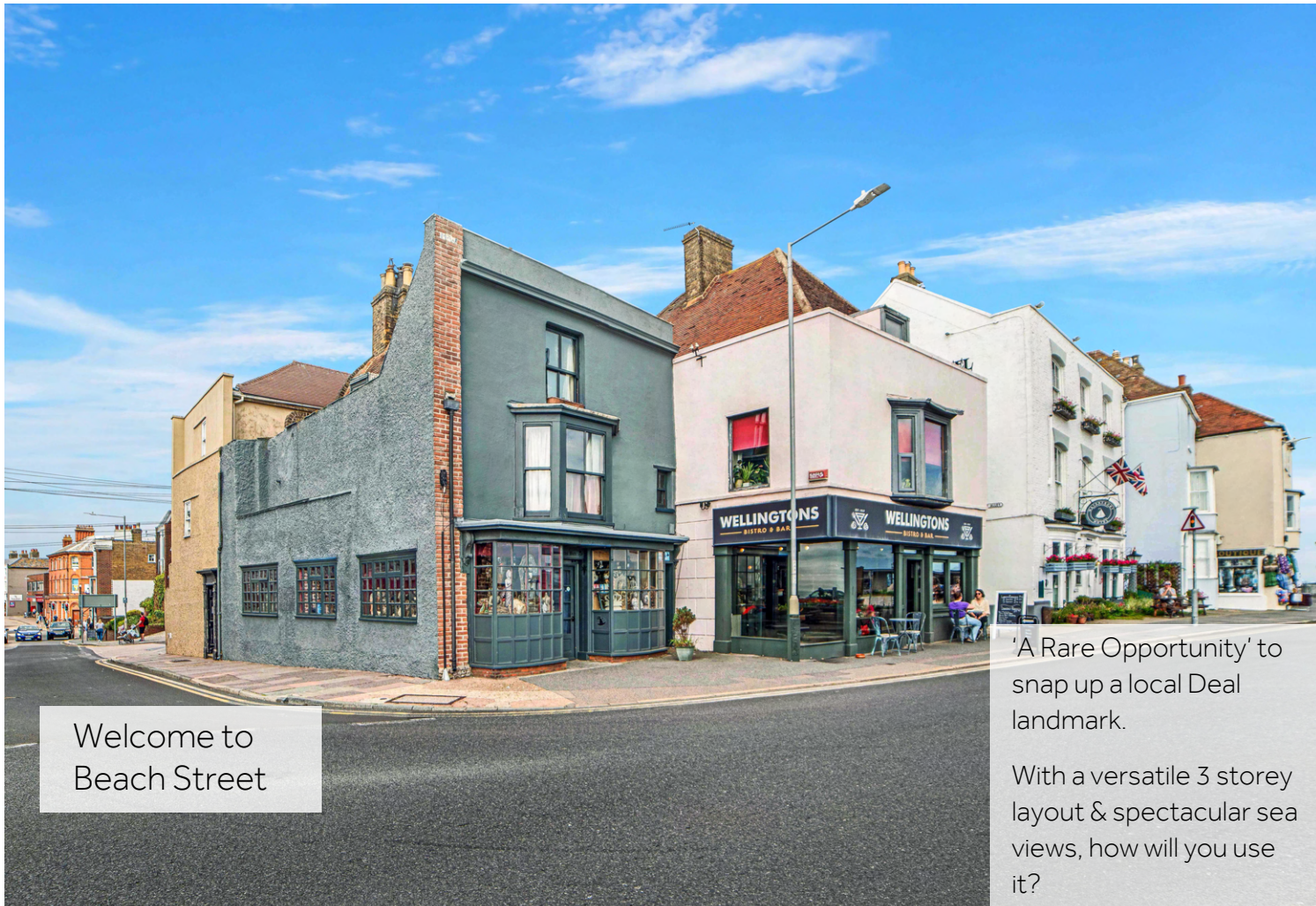
Beach Street

DEAL

JOHN BIRD



www.johnbird.exp.uk.com



Welcome to
Beach Street

'A Rare Opportunity' to
snap up a local Deal
landmark.

With a versatile 3 storey
layout & spectacular sea
views, how will you use
it?



Key features

- No Onward Chain
- Spectacular Sea Views, Steps away from the Beach
- Versatile 3 storey layout, ground floor Retail Opportunity
- Great Transport links to London

Step inside

Stunning sea views - on a clear day you can see across to France.

The ground floor has most recently been used as a retail business.

Two storey living accommodation (with separate access) above.



The first floor includes a spacious lounge dining room with an open fire and raised bay window to the front, giving wonderful sea views.

PERIOD CHARM

The whole property is dripping in period charm, with exposed ceiling beams throughout and gorgeous casement windows in the two ground floor bays.



The kitchen is homely and welcoming.

And there's plenty of space for a dining table or perhaps a kitchen island.



The top floor includes two double bedrooms and a separate WC.



Out and About

This imposing three storey end terrace sits at the gateway from the seafront to the narrow streets that make up Deal's Middle Street Conservation Area.

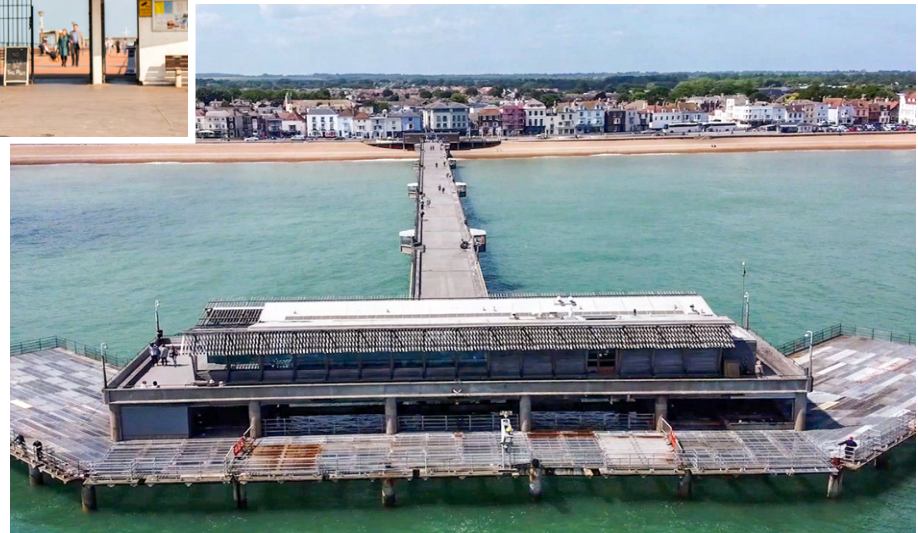


If you're looking to enjoy a peaceful life by the sea,

Deal may be just the place for you.



The traditional character and feel of the 'smugglers lanes' have been preserved, surely one reason why this is such a well-loved & popular part of this historic maritime town.





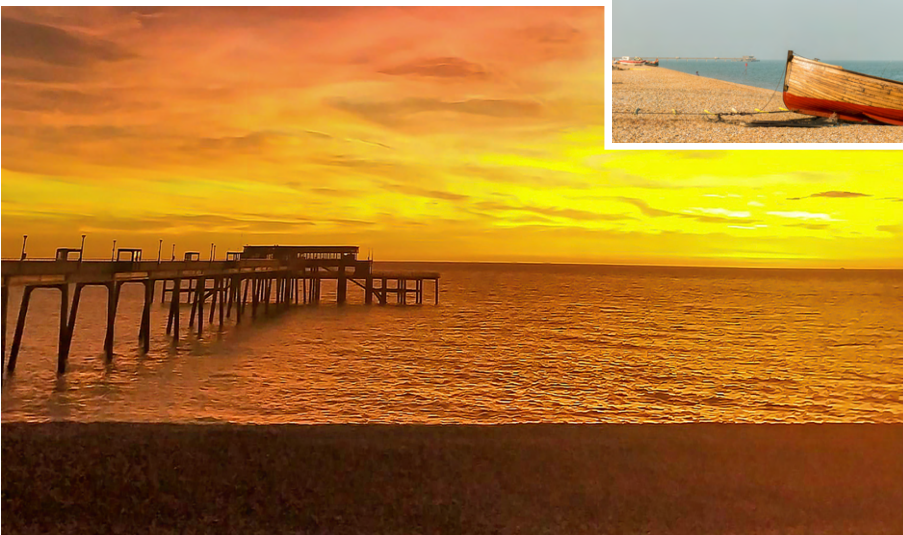
OPPORTUNITIES

Whether you've dreamed of running your own retail business, food outlet or micropub, the busy location right on the seafront will be hard to beat.

And the current three storey layout would lend itself to having a spacious lounge on the ground floor and a kitchen at the rear.



Kent's Heritage Coast - 4th on Lonely Planet's list of the world's best regions to visit in 2022!



It's less than 90 minutes from London. That could be handy for you but also gives access to millions of potential guests looking for a convenient coastal getaway.

And don't forget you would then have your very own seaside getaway at your disposal, whenever you fancy a quiet weekend away...

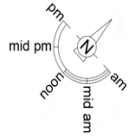


JOHN BIRD

POWERED BY
exp™ UK

📞 01304 251 425
✉ john.bird@exp.uk.com
🌐 johnbird.exp.uk.com

FREE
Instant Valuation



Approximate Gross Internal Area
163.3 sq m / 1758 sq ft

This plan is for layout guidance only. Not drawn to scale unless stated. Windows and door openings are approximate. Whilst every care is taken in the preparation of this plan, please check all dimensions, shapes and compass bearings before making any decisions reliant upon them. (ID999142)



HomeSearch.

rightmove

Zoopla
Smarter about property

PrimeLocation.com