



HENRY  **WILTSHIRE**

www.henrywiltshire.co.uk

Henry Wiltshire Limited Company Registration No. 07120440 VAT Registration No. 994 397 354

Registered Office: 2 Laybourne House, Admirals Way, Canary Wharf, London, United Kingdom E14 9UH

Boxley Street, London, E16 2AN

Guide Price £600,000

3 2



New to the market!! Three bedroom, two bathroom freehold mid-terraced house situated within the heart of Royal Wharf benefiting from a large east facing private garden and on street parking.





Floor Area
1205 sq. ft.

Tenure
Freehold

Service Charge
£0 per annum

Ground Rent
£0 per annum



Boxley Street

Approximate Gross Internal Floor Area = 125.4 sq m / 1350 sq ft

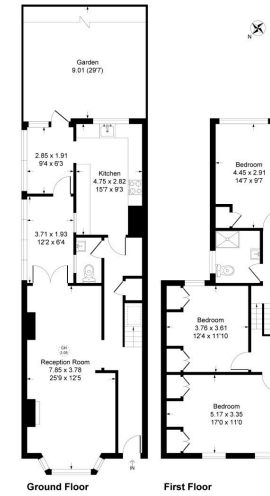


Illustration for identification purposes only, measurements are approximate, not to scale.

Energy Efficiency Rating

	Current	Potential
<i>Very energy efficient - lower running costs</i>		
(92 plus) A		
(81-91) B		84
(69-80) C		
(55-68) D	64	
(39-54) E		
(21-38) F		
(1-20) G		
<i>Not energy efficient - higher running costs</i>		
England & Wales	EU Directive 2002/91/EC	

UK Offices | Canary Wharf - E14 | Nine Elms - SE1 | Royal Docks - E16 | Bow - E3 | Hayes, Middlesex - UB3 | Manchester - M2

International Offices | Dublin | Abu Dhabi | Hong Kong | Singapore

