

**NEW
PRICE!**

**Appletree Close,
Attleborough**

**Asking Price of
£212,500**

Council Tax Band- A

ABOUT THE PROPERTY

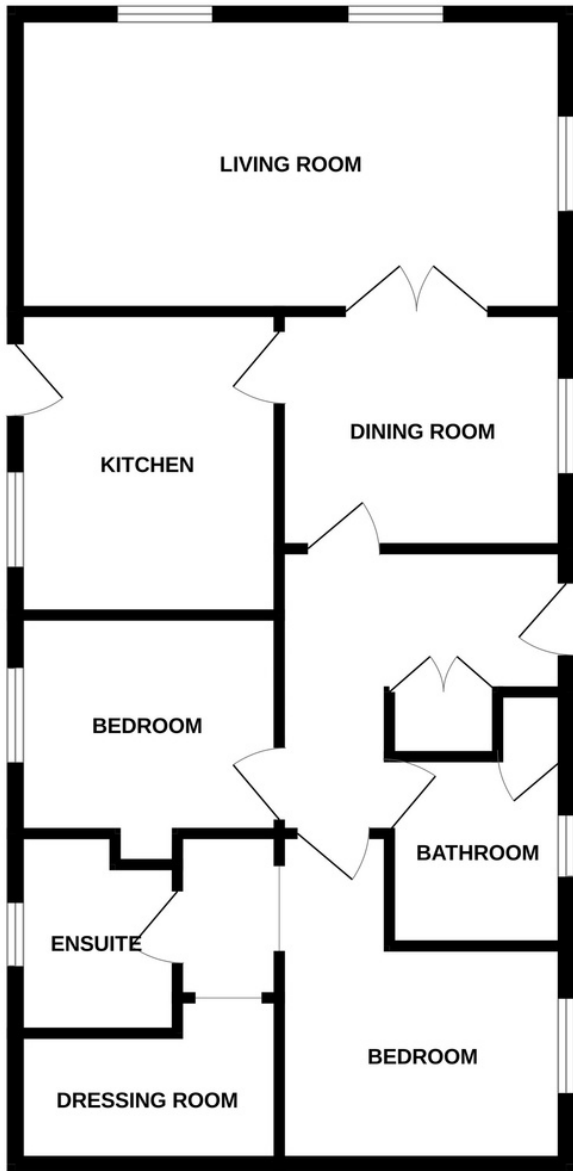
- Two bedroom luxury park home
- Ensuite and walk in wardrobe to bedroom one
- Two double bedrooms
- Popular over 45s development
- Located within close proximity to the town centre, local bus routes and the A11
- Council tax band A and monthly service charge/ground rent £189
- Off-road parking for x2 cars
- 19ft dual aspect living room
- Picturesque landscaped garden
- No onward chain!!!





Moneyproperties bring to market this immaculately presented two-bedroom luxury park home on the sought after over 45s residential development within close proximity to Attleborough town centre, local bus routes and the A11 towards Norwich and Cambridge. This spacious property benefits from bright and airy living throughout and comprises of an entrance hall, 19ft bay fronted living room, separate dining room, modern kitchen, and shower room. The property also benefits from two double bedrooms with an ensuite and walk in wardrobe to bedroom one. To the outside comes a picturesque landscaped wraparound rear garden and off-road parking for x2 cars.

GROUND FLOOR



Agents Note: Whilst every care has been taken to prepare these particulars, they are for guidance purposes only. All measurements are approximate are for general guidance purposes only and whilst every care has been taken to ensure their accuracy, they should not be relied upon and potential buyers/tenants are advised to recheck the measurements.



More information call us:
01953 423006