

**NEW
PRICE!**

**Colman Way,
East Harling**

**Guide Price Of
£375,000 - £400,000**

**Council Tax Band- C
EPC- B**

ABOUT THE PROPERTY

- Immaculately presented three-bedroom semi-detached townhouse
- Located on a quiet cul de sac in the popular village of East Harling
- Three double bedrooms all with built in wardrobes and two with ensembles
- 18ft versatile outbuilding currently being used as a home gym/study
- Single garage with off-road parking
- Within ease of access to the A11 for commuting towards Norwich and Cambridge
- Close proximity to all local amenities
- Vendors have found!!!

3



3



2/3



MONEY
PROPERTIES

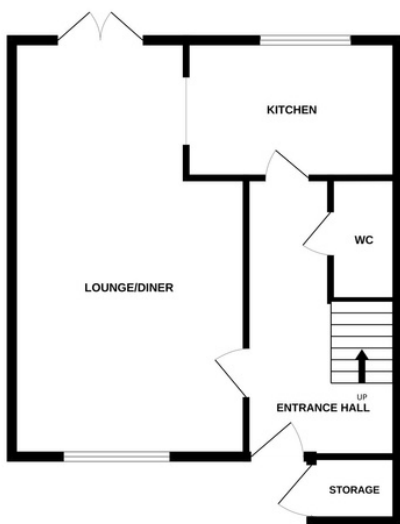
The Local Name You Can Trust

01953 423006

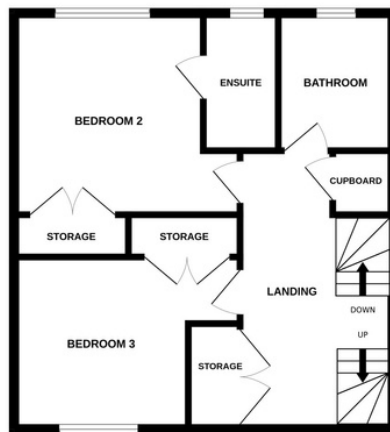


Moneyproperties are delighted to be marketing this immaculate three-bedroom semi-detached townhouse located on a quiet cul de sac in the popular village of East Harling. Set across three floors this stylish and modern home comprises of an entrance hall complete with custom built under stair storage, 24ft dual aspect living room/diner, well-presented kitchen and downstairs wc. To the first floor comes two double bedrooms both with built in wardrobes, one with an ensuite and a spacious family bathroom. On the second floor you will find the well-equipped master bedroom complete with two built in wardrobes and an ensuite. Outside the property enjoys a generous rear garden with an 18ft versatile outbuilding currently providing a gym and office but can be perfectly adapted to the needs of the purchaser. Further benefits include a single garage and off-road parking.

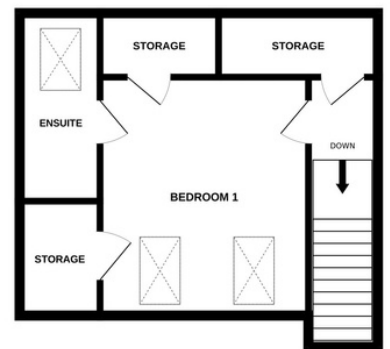
GROUND FLOOR



1ST FLOOR



2ND FLOOR



Agents Note: Whilst every care has been taken to prepare these particulars, they are for guidance purposes only. All measurements are approximate and for general guidance purposes only and whilst every care has been taken to ensure their accuracy, they should not be relied upon and potential buyers/tenants are advised to recheck the measurements.



More information call us:
01953 423006