



# Goldfinch Drive, Attleborough

Asking Price of  
£285,000



- Spacious three-bedroom semi-detached townhouse
- Set across three floors
- Located on the edge of a popular residential development
- Three double bedrooms with an ensuite to bedroom one
- Within ease of access to the town centre and the A11 towards Norwich and Cambridge
- Favourable outlook onto the communal green space
- Enclosed rear garden with off-road parking for x2 cars
- Generous living room with french doors to the garden



## Property Description

Moneyproperties are delighted to bring to market this well-presented three-bedroom semi-detached town house located on the edge of a popular residential development in Attleborough.

Set across three floors the property provides an entrance hall, spacious kitchen/breakfast room, 16ft open plan kitchen/diner with French doors leading to the rear garden and a wc.

To the first floor comes two double bedrooms and the family bathroom. The second floor comprises of a generous main bedroom with an ensuite.

This spacious property also benefits from a desirable outlook onto the communal green area, an enclosed rear garden, and being within ease of access to the town centre and A11 for commuting towards Norwich and Cambridge.

### Agents Notes -

We understand the property will be sold Freehold, connected to all mains services with gas central heating and cavity wall construction. We have been made aware that the property has good mobile signal/coverage.

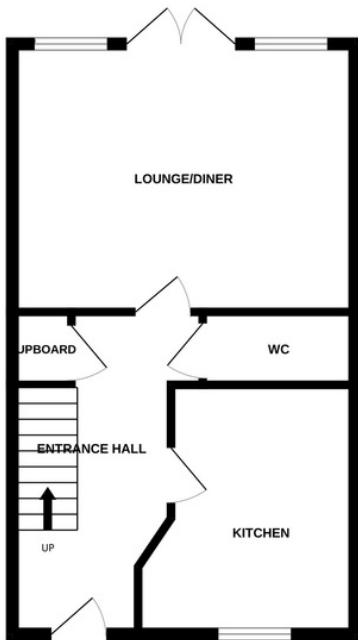
Phone service can be checked at [HTTP://CHECKER.OFCOM.ORG.UK/](http://CHECKER.OFCOM.ORG.UK/)  
The flood risk is low and can be checked at [HTTP://WWW.GOV.UK/CHECK-LONG-TERM-FLOOD-RISK](http://WWW.GOV.UK/CHECK-LONG-TERM-FLOOD-RISK)

Council tax band - C, EPC - B, Freehold

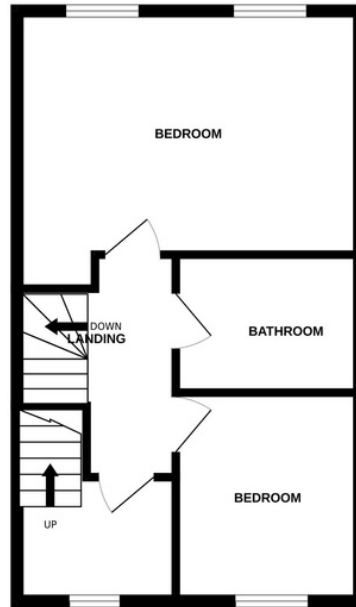


# Floorplan and Room Measurements

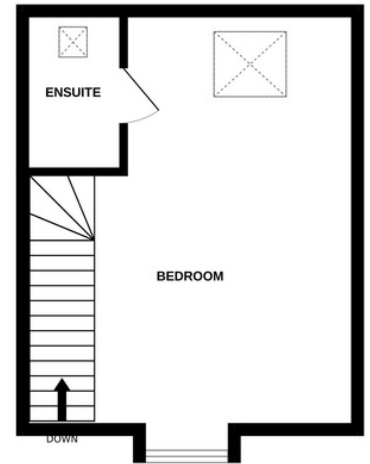
GROUND FLOOR



1ST FLOOR



2ND FLOOR



- LIVING ROOM/DINER - 4.75M X 3.71M (15'7" X 12'2")
- KITCHEN/BREAKFAST ROOM - 3.43M X 3M (11'3" X 9'10")
- WC - 2.13M X 1.02M (6'12" X 3'4")
- BEDROOM - 4.75M X 3.4M (15'7" X 11'2")
- BEDROOM - 2.87M X 2.57M (9'5" X 8'5")
- BATHROOM - 2.51M X 1.91M (8'3" X 6'3")
- BEDROOM - 6.1M X 4.7M (19'12" X 15'5")
- ENSUITE - 2.24M X 1.4M (7'4" X 4'7")
- REAR GARDEN - 10.69M X 6.73M (35'1" X 22'1")

Agents Note: Whilst every care has been taken to prepare these particulars, they are for guidance purposes only. All measurements are approximate and for general guidance purposes only and whilst every care has been taken to ensure their accuracy, they should not be relied upon and potential buyers/tenants are advised to recheck the measurements.



## Wymondham

Money Properties 16  
Market Street  
Wymondham  
NR18 0BB

United Kingdom

**Contact Number**

01953 423 006 (Option 1)

**Email Address**

post@moneyproperties.co.uk

## Attleborough

Money Properties  
Exchange Street  
Attleborough  
NR17 2AB

United Kingdom

**Contact Number**

01953 423 006 (Option 2)

**Email Address**

info@moneyproperties.co.uk

## Money Lettings

Money Lettings  
6A Whartons Court  
Wymondham  
NR18 0UQ

United Kingdom

**Contact Number**

01953 601300

**Email Address**

post@moneylettings.co.uk



[WWW.MONEYLETTINGS.CO.UK](http://WWW.MONEYLETTINGS.CO.UK)

[WWW.MONEYPROPERTIES.CO.UK](http://WWW.MONEYPROPERTIES.CO.UK)