



# Hale Road, Ashill

Asking Price of  
£650,000



- Executive style detached new build house
- Four well-proportioned bedrooms with an ensuite to bedroom one and two
- Set in the beautiful Norfolk countryside
- Purpose built development of just 5 dwellings built by a reputable local builder
- Finished to a high-specification throughout
- Underfloor heating downstairs, radiators upstairs with air source heat pump
- Stylish open plan kitchen/diner leading to separate family room
- Spacious living room with wood burning stove
- Garage with off-road parking
- Good-sized rear garden with field views to the rear



*The Local Name You Can Trust*

# Hale Road, Ashill

## Property Description

Moneyproperties are thrilled to present the opportunity to purchase this brand new four-bedroom detached house set in the beautiful Norfolk countryside in Ashill.

The property is on a purpose-built development of just 5 executive style properties that are being built by a reputable local builder. This fantastic house comprises of a spacious living room with wood burning stove, stylish open plan kitchen/diner leading to a separate family room, utility room, downstairs wc and study. To the upstairs comes four well-proportioned bedrooms with an ensuite to bedroom one and two along with a family bathroom. Outside the property benefits from a garage, off-road parking and a good-sized rear garden with field views to the rear.

### Agents Notes -

We understand the property will be sold Freehold, connected to all mains services and cavity wall construction with solar panels to the roof, air source heat pump with underfloor heating

This can be checked at [HTTP://CHECKER.OFCOM.ORG.UK/](http://CHECKER.OFCOM.ORG.UK/)

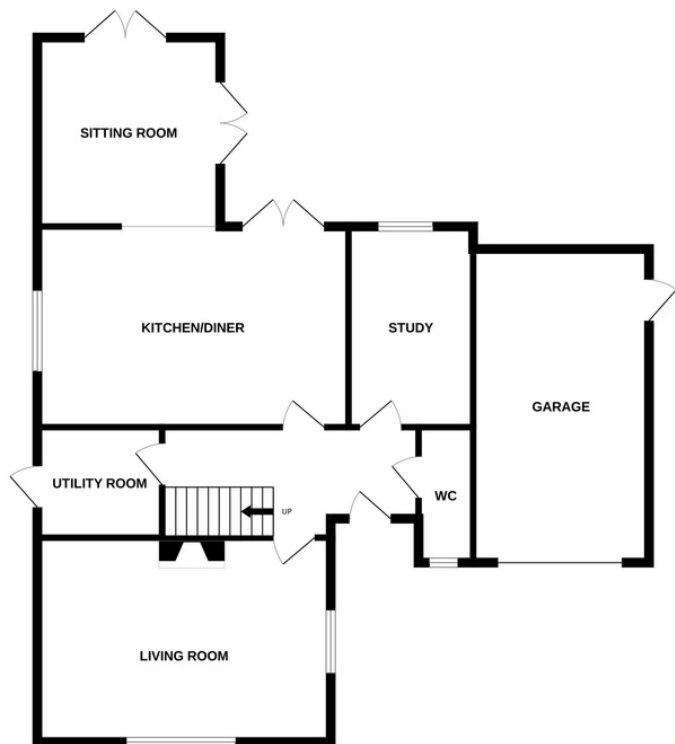
The flood risk is low and can be checked at [HTTP://WWW.GOV.UK/CHECK-LONG-TERM-FLOOD-RISK](http://WWW.GOV.UK/CHECK-LONG-TERM-FLOOD-RISK)

Council tax band TBC, EPC - TBC, Freehold

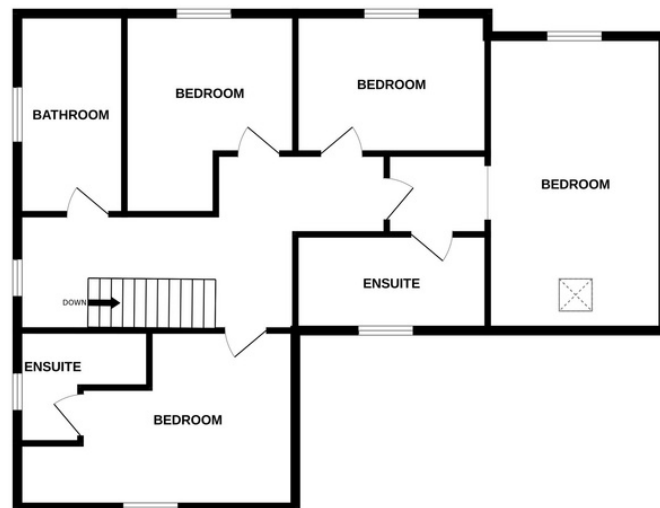


# Floorplan and Room Measurements

GROUND FLOOR



1ST FLOOR



ALL MEASUREMENTS ARE APPROXIMATE AND TAKEN FROM ARCHITECT DRAWINGS

- LIVING ROOM - 5.41M X 4.17M (17'9" X 13'8")
- KITCHEN/DINER - 7.19M X 3.73M (23'7" X 12'3")
- FAMILY/SITTING ROOM - 4.19M X 4.17M (13'9" X 13'8")
- UTILITY ROOM - 2.34M X 1.88M (7'8" X 6'2")
- STUDY - 3.71M X 2.74M (12'2" X 9'0")
- BEDROOM ONE - 5.41M X 4.17M (17'9" X 13'8")
- ENSUITE - 2.44M X 2.21M (8'0" X 7'3")
- BEDROOM TWO - 5.41M X 3.25M (17'9" X 10'8")
- ENSUITE - 3.58M X 1.75M (11'9" X 5'9")
- BEDROOM THREE - 3.68M X 3.3M (12'1" X 10'10")
- BEDROOM FOUR - 3.58M X 2.62M (11'9" X 8'7")
- BATHROOM - 3.68M X 1.98M (12'1" X 6'6")
- GARAGE - 6.2M X 3.25M (20'4" X 10'8")

Agents Note: Whilst every care has been taken to prepare these particulars, they are for guidance purposes only. All measurements are approximate are for general guidance purposes only and whilst every care has been taken to ensure their accuracy, they should not be relied upon and potential buyers/tenants are advised to recheck the measurements.



## Wymondham

Money Properties 16  
Market Street  
Wymondham  
NR18 0BB

United Kingdom

**Contact Number**

01953 423 006 (Option 1)

**Email Address**

post@moneyproperties.co.uk

## Attleborough

Money Properties  
Exchange Street  
Attleborough  
NR17 2AB

United Kingdom

**Contact Number**

01953 423 006 (Option 2)

**Email Address**

info@moneyproperties.co.uk

## Money Lettings

Money Lettings  
6A Whartons Court  
Wymondham  
NR18 0UQ

United Kingdom

**Contact Number**

01953 601300

**Email Address**

post@moneylettings.co.uk



[WWW.MONEYLETTINGS.CO.UK](http://WWW.MONEYLETTINGS.CO.UK)

[WWW.MONEYPROPERTIES.CO.UK](http://WWW.MONEYPROPERTIES.CO.UK)