



3 Heath Farm Gardens, Garsdon, Malmesbury, Wiltshire, SN16 9NW

Brand new contemporary barn conversion
Peaceful countryside setting
Magnificent open plan design with views
2 bedrooms with en-suites
Large mezzanine bedroom
Neptune fitted kitchen and Burlington style
bathrooms
Underfloor heating via air source heat pump
Private garden
3 miles from Malmesbury
Available to view now



01666 840 886
jamespyle.co.uk



The Barn, Swan Barton, Sherston, Wiltshire, SN16 0LJ
James Pyle Ltd trading as James Pyle & Co. Registered in England & Wales No: 08184953

Price Guide: £750,000

Approximately 1,411 sq.ft

‘A brand new architecturally designed contemporary barn conversion set within a private, peaceful countryside setting. Impressive high quality accommodation’



The Property

3 Heath Farm Gardens is a brand new contemporary barn conversion peacefully located in an idyllic countryside setting in the rural Wiltshire village of Garsdon, about 3 miles outside of Malmesbury. Occupying the southerly position, the property has both front and rear gardens plus a magnificent outlook across private grounds and fields beyond. Architecturally designed with a stunning contemporary aesthetic, the configuration is centred around a spectacular double height open plan kitchen/living room with floor to ceiling height glazed elevations and a spacious mezzanine floor above. Featuring limestone tiles and oak flooring, the property is warmed throughout by underfloor heating through an air-sourced heat pump system. The kitchen is finished with Neptune solid wood units and integrated appliances whilst other high quality finishes include oak doors and skirtings, an oak staircase, electric switch operated windows, and elegant bathrooms fitted in the

Burlington range. The accommodation is filled with natural light and extends to over 1,400 sq.ft. comprising the spectacular 38ft kitchen/living room, two double bedrooms, both with an en-suites and the principal bedroom with a dressing room too, a further main bathroom and a utility room. The large mezzanine floor provides an additional bedroom space or other options such as a home office, reception space or hobby room. The barn is approached over a tree-lined driveway leading to the large private grounds surrounding the barns. There is private parking for two cars behind the barn beside the garden. There are options to include additional land/garden by further negotiation, please ask the agent for more details.

Situation

The properties occupy a peaceful rural setting on the edge of the sought-after village of Garsdon. Garsdon is an unspoilt village with a church whilst the larger village of Lea is also

only 1 mile away and has the popular 'Rose and Crown' pub, primary school, and active village hall. There are lovely walks amongst the surrounding countryside. Malmesbury is the nearest town (about 3 miles) and is reputed to be the oldest borough in England created by Charter in 880 AD by Alfred the Great. Today, the High Street has numerous independent shops, pubs, restaurants and cafes, there is also a new Aldi store, Waitrose store and a regular weekly Farmer's market. The town has an excellent choice of both primary and secondary schools and very good recreational and leisure facilities. The M4 motorway Junction 17 to the south provides fast road access to Bristol and the West Country while Junction 16 gives access to London. Main line rail services are available from Chippenham, Swindon and Kemble (Paddington in about 75 minutes).

Additional Information

The property is Freehold with underfloor air

source heat pump heating, private drainage, mains water and electricity.

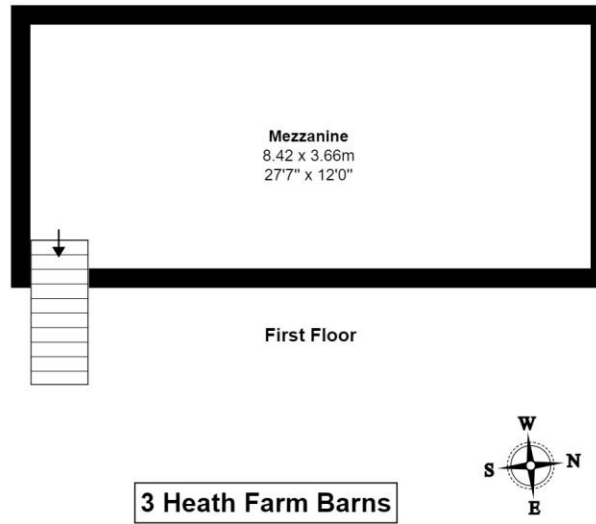
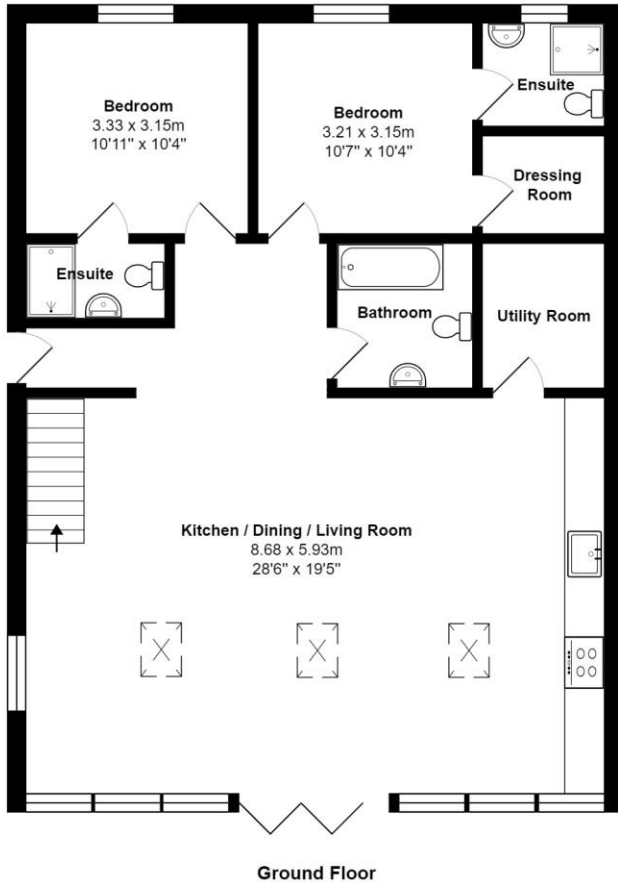
Directions

From the Malmesbury Budgens garage roundabout, head towards Minety and take the next immediate right into Milbourne. Follow the road through the village and continue along the lane towards Garsdon. Proceed over the crossroads into Garsdon. Pass the turning for Park Lane and then locate the driveway signed to Heath Farm on the right hand side.

Postcode SN16 9NW

What3words: ///sprinkler.boom.touches





Total Area: 131.1 m² ... 1411 ft²

All measurements are approximate and for display purposes only



James Pyle Holdings Ltd and any parties they are acting for hereby give notice that these details are for guidance only and cannot guarantee accuracy of any description, dimension, condition or any required permission for occupation and use. It is not company policy to test any services or appliances in properties offered for sale and these should be verified by the purchaser's solicitors. James Pyle Holdings Ltd will not be liable for any loss arising from the use of these details. No responsibility is taken for any errors, omissions or misstatements within these particulars. It should not be assumed that the property has all the necessary planning, building regulation or other consents. These particulars do not form any part of any offer or contract and must not be relied upon as statements or representations of fact. James Pyle & Co is a trading name of James Pyle Holdings Ltd, registered in England & Wales. Registered number 10927906

COTSWOLD & COUNTY (HEAD OFFICE)

The Barn, Swan Barton, Sherston SN16 0LJ

01666 840 886 or 01452 812 054

LONDON (ASSOCIATE OFFICE)

121 Park Lane, Mayfair W1k 7AG

0207 0791 577