

25 The Tartars, Sherston, Malmesbury, Wiltshire, SN16 0NT

Detached house
 Superb plot backing onto fields
 Quiet end of cul-de-sac setting
 3/4 bedrooms, 2 bathrooms
 Light-filled living room
 Modern fitted kitchen/dining room
 Updated accommodation with further scope
 Private parking and garage
 Easy walking distance from amenities
 No onward chain



01666 840 886
 jamespyle.co.uk



The Barn, Swan Barton, Sherston, Wiltshire, SN16 0LJ
 James Pyle Ltd trading as James Pyle & Co. Registered in England & Wales No: 08184953

Price Guide: £650,000

Approximately 1,208 sq.ft excluding garage



‘Occupying one of the best positions within this popular village close, this detached house sits well within it's sizable plot backing onto fields’

The Property

This 1970's built detached house occupies possibly the best plot on this popular village development, discreetly tucked away in a quiet corner backing onto open fields and having a superb view over the village to the front. The property is conveniently located just a few minutes' walk from the centre of this highly sought after village and its many amenities. The house has been the subject of many improvements and updates in recent years including all new windows, updated kitchen and bathrooms, and new external cladding. The excellent accommodation extends to around 1,208 sq.ft enjoying views throughout. The house sits comfortably within its plot with great potential to extend, subject to planning. The property is available chain free and has been mostly redecorated with further scope for the new owners to put their stamp on it.

The ground floor accommodation includes an entrance hall, downstairs WC, versatile ground floor bedroom/second reception room, a kitchen/dining room, and living room. The

spacious living room is filled with natural light through windows overlooking the garden and field beyond plus bi-fold doors. The modern kitchen/dining room is arranged around a central island unit. Upstairs, there are three double bedrooms. The principal bedroom has a private en-suite shower room whilst the family bathroom is equipped with a shower over the bath.

Set away from the close by a driveway and front lawn, the property has a garage and ample private parking for several cars. The wraparound gardens enjoy all day sunshine and are probably the largest gardens within The Tarters.

Situation

The beautiful, ancient and much sought after village of Sherston with its broad High Street and historic stone houses is set in an Area of Outstanding Natural Beauty conveniently located on the edge of the Cotswolds. Sherston has a thriving community and offers many facilities, including a church, popular primary school, doctors surgery, Co-op shop and post

office, coffee shops, hairdresser, Indian restaurant, garden centre and the highly regarded 16th century Rattlebone Inn, with its excellent food and friendly atmosphere. The facilities and amenities in Sherston more than adequately provide for everyday need with a whole host of societies and clubs meeting on a regular basis offering entertainment and social events for young and old alike. Schooling locally is second to none, with very good state and independent schools providing transport to and from the village on a daily basis. Close by are the market towns of Malmesbury and Tetbury which are both approximately 5 miles away. Malmesbury is reputed to be the oldest Borough in the country dating back to the 11th Century. Both towns offer a wider range of shops, services, schooling and leisure facilities. There are main line stations to London-Paddington at Kemble (14 miles) and Chippenham (12 miles) whilst Junctions 17 & 18 of the M4 are both within 15 minutes' drive providing convenient access to Bath, Bristol and Swindon.

Additional Information

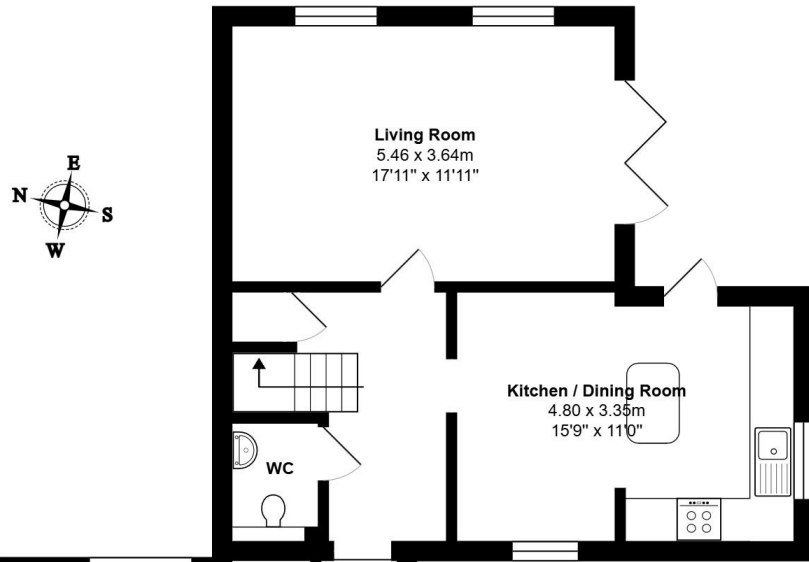
The property is Freehold with oil-fired central heating, mains drainage, water and electricity. The property is located within the Cotswolds Area of Outstanding Natural Beauty. Superfast broadband is available and there are some limitations to mobile phone coverage. Information taken from the Ofcom mobile and broadband checker, please see the website for more information. Wiltshire Council Tax Band E.

Directions

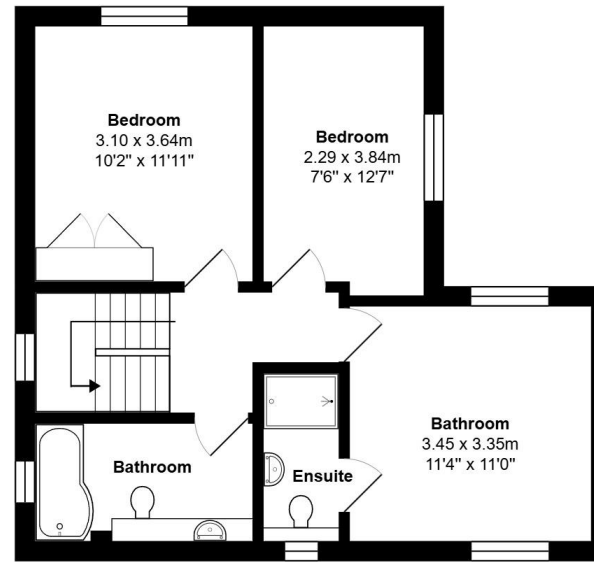
Approaching Sherston from Malmesbury, turn left just before The Bridge restaurant into Easton Town and follow the road into The Tarters. Continue to follow the road until the very end to locate number 25 tucked away up a drive on the left-hand side.

Postcode SN16 0NT
 What3words: ///phantom.soft.directive

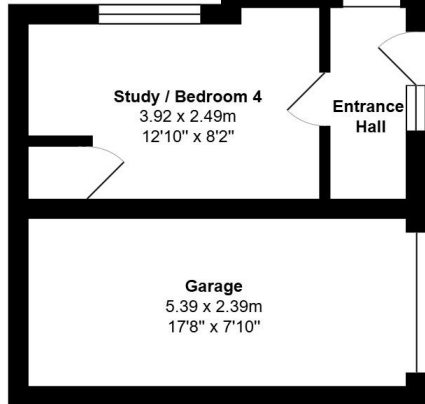




Ground Floor



First Floor



Total Area: 112.2 m² ... 1208 ft² (excluding garage)

All measurements are approximate and for display purposes only

Energy Efficiency Rating		Current	Potential
Very energy efficient - lower running costs			
(92 plus)	A		
(81-91)	B		
(69-80)	C		80
(55-68)	D	60	
(39-54)	E		
(21-38)	F		
(1-20)	G		
Not energy efficient - higher running costs			
England & Wales		EU Directive 2002/91/EC	



James Pyle Holdings Ltd and any parties they are acting for hereby give notice that these details are for guidance only and cannot guarantee accuracy of any description, dimension, condition or any required permission for occupation and use. It is not company policy to test any services or appliances in properties offered for sale and these should be verified by the purchaser's solicitors. James Pyle Holdings Ltd will not be liable for any loss arising from the use of these details. No responsibility is taken for any errors, omissions or misstatements within these particulars. It should not be assumed that the property has all the necessary planning, building regulation or other consents. These particulars do not form any part of any offer or contract and must not be relied upon as statements or representations of fact. James Pyle & Co is a trading name of James Pyle Holdings Ltd, registered in England & Wales. Registered number 10927906

COTSWOLD & COUNTY (HEAD OFFICE)

The Barn, Swan Barton, Sherston SN16 0LJ

01666 840 886 or 01452 812 054

LONDON (ASSOCIATE OFFICE)

121 Park Lane, Mayfair W1k 7AG

0207 0791 577