



MILLINGTON TUNNICLIFF

www.millingtontunncliff.co.uk

West Park Drive, Plymouth, PL7 2GZ

£230,000

2 1 1



A modern 2 bedroom brick built semi detached house located within this popular cul de sac convenient for local amenities. The house offers an entrance hall, living room and kitchen/diner on the ground floor, together with landing, the 2 bedrooms and bathroom on the upper floor. There is a driveway and garage at side and super enclosed level westerly facing rear garden. The house is Upvc double glazed and gas centrally heated. EPC C 71.

01752 896020 | info@millingtontunncliff.co.uk | 19 Fore Street, Ivybridge, Devon, PL21 9AB

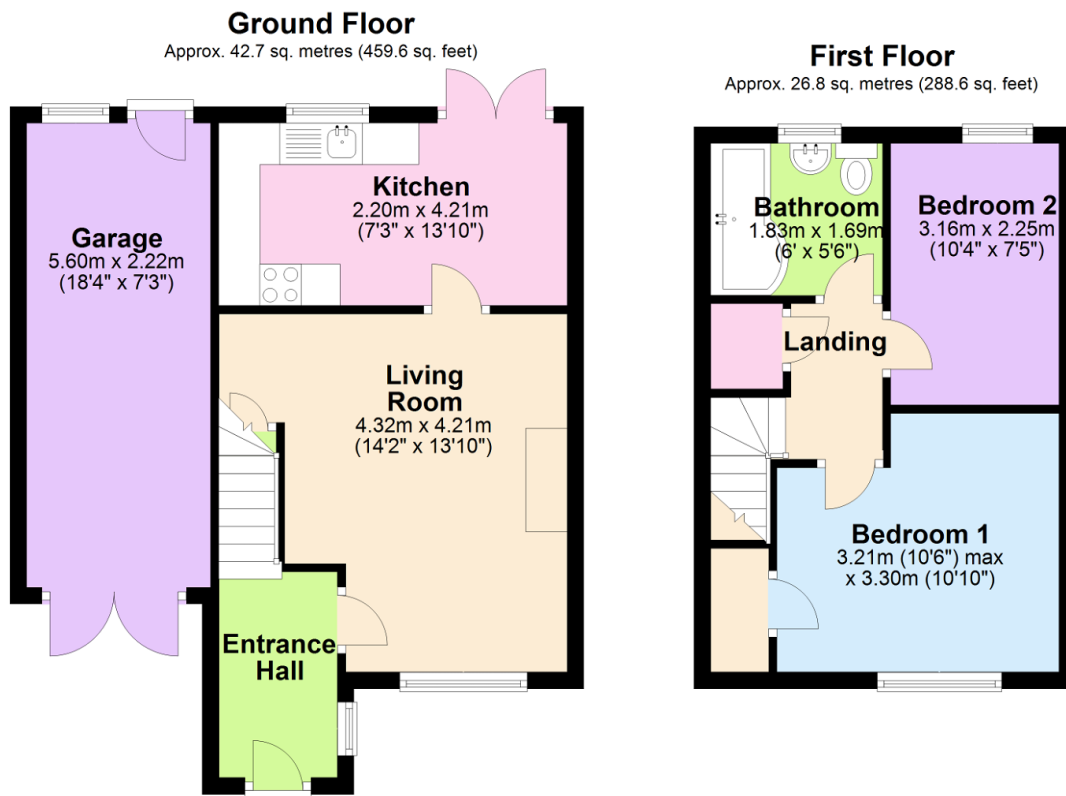


MILLINGTON TUNNICLIFF

www.millingtontunncliff.co.uk

Key Features

- Brick Built Semi Detached House
- Driveway And Garage At Side
- Feature Level Enclosed Westerly Facing Rear Garden
- Gas Central Heating
- Modern Bathroom/WC
- 2 Bedrooms
- Spacious Living Room
- Upvc Double Glazing
- Popular Modern Cul De Sac
- EPC C 71



Total area: approx. 69.5 sq. metres (748.2 sq. feet)

01752 896020 | info@millingtontunncliff.co.uk | 19 Fore Street, Ivybridge, Devon, PL21 9AB