



36 Ivydene Road,

£285,000

3 1 2

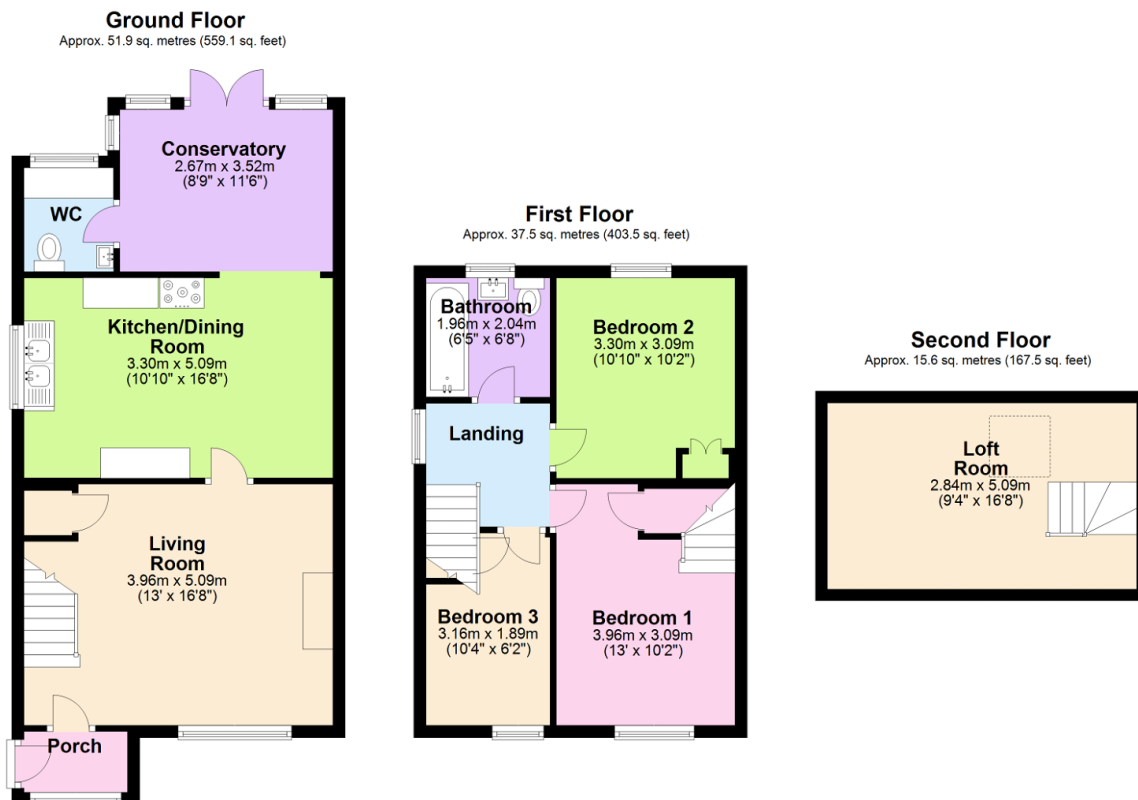


A 3 bedroom semi detached house located on the popular western side of Ivybridge , convenient to local amenities. The house offers an entrance porch, spacious living room, kitchen/diner, conservatory and utility/cloakroom on the ground floor, together with landing, 3 bedrooms and modern bathroom on the upper floor. There is a feature converted loft room off the main bedroom. The house is Upvc double glazed and gas centrally heated. Externally there is a level enclosed rear garden and long driveway at side to the garage. EPC D 64.



Key Features

- 3 Bedroom Semi Detached House
- Feature Loft Room
- Upvc Double Glazed Conservatory/Utility
- Freestanding Ikea Style Kitchen Units With Gas Cooker Range
- Long Driveway At Side To The Garage
- Level Enclosed Rear Garden
- Upvc Double Glazed Conservatory
- Gas Central Heating
- Modern Bathroom
- Feature Enclosed Living Flame Fire Within Living Room



Total area: approx. 105.0 sq. metres (1130.1 sq. feet)