


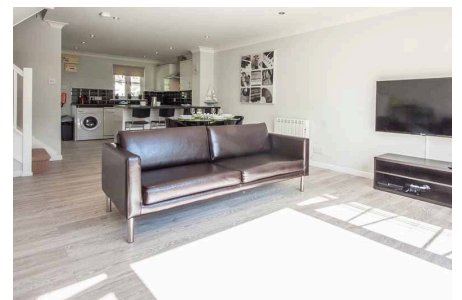


Isis Lake 18, Isis & Windrush Lakes, GL7 5TL

£365,000

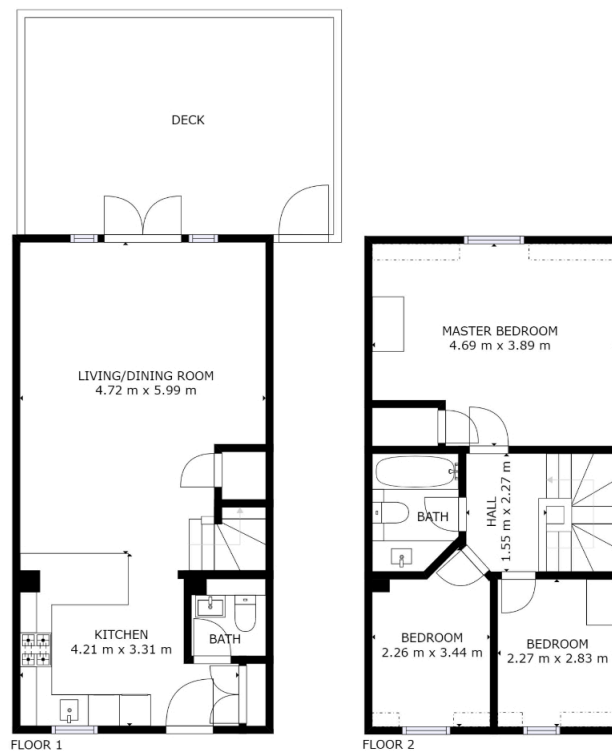
 3  2  1



A beautifully kept 3 bedroom holiday home on the sought after Isis & Windrush Lakes development. This property has, in the last few years been renovated downstairs with new PVC windows throughout. This property offers a larger than usual deck area as well as gorgeous lake views from the kitchen. The open plan kitchen, living and dining area is perfect for entertaining and there is access to tennis courts, kids play area and games pavilion within a 2 minute walk. Currently a successful holiday let property.

Key Features

- 3 bedroom, end of terrace holiday home
- Large deck
- Located perfectly for use of tennis courts, kids play areas etc
- Access to Isis Lakes for fishing
- Access to Windrush lake for non-motorised water sports
- Successful holiday let
- EPC rating C
- 24/7 gated security
- Located in heart of the Cotswolds
- South west facing sun deck



GROSS INTERNAL AREA
FLOOR 1: 44 m², FLOOR 2: 42 m²
EXCLUDED AREAS: DECK: 25 m²
REDUCED HEADROOM BELOW 1.5M: 2 m²
TOTAL: 86 m²
SIZES AND DIMENSIONS ARE APPROXIMATE, ACTUAL MAY VARY.

POWERED BY
 matterport