



33 Ronsdale Close, Pomphlett, Plymouth, Devon, PL9 7QZ



Price £215,000



Situated in Central Plymstock is this spacious three bedroom end terrace family home situated in a quiet cul-de-sac within the heart of Plymstock. The property itself needs modernisation and comprises on the ground floor; an entrance porch, a generous size entrance hall, a kitchen and a lounge/diner. On the first floor are 3 bedroom and a bathroom.

Externally to the front of the property there is a garden, a carport, ample parking and a garage, whilst to the rear there is an enclosed garden.



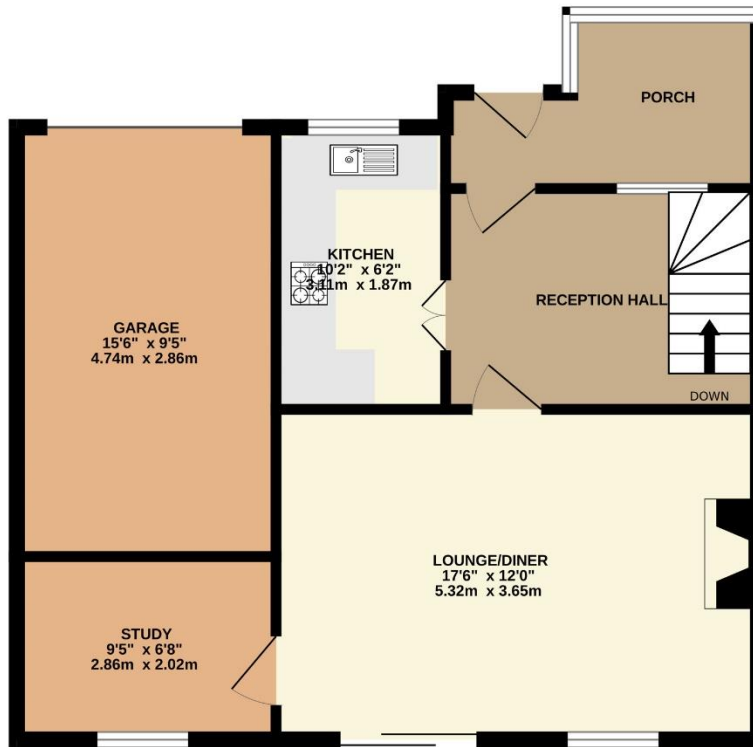
A short distance from the property there are local amenities that can be found at Morrison's Superstore and the Plymstock Broadway Shopping Centre. There are local schools including Pomphlett Primary and Plymstock Comprehensive. There are a wide range of leisure facilities available in Plymstock, including the Mount Batten Water Sports Centre, Staddon Heights Golf Course, Fort Stamford Leisure Centre and public beaches at Bovisand, Jennycliff and Wembury.

To view this property call Lang Town & Country Estate Agents on **01752 456000**

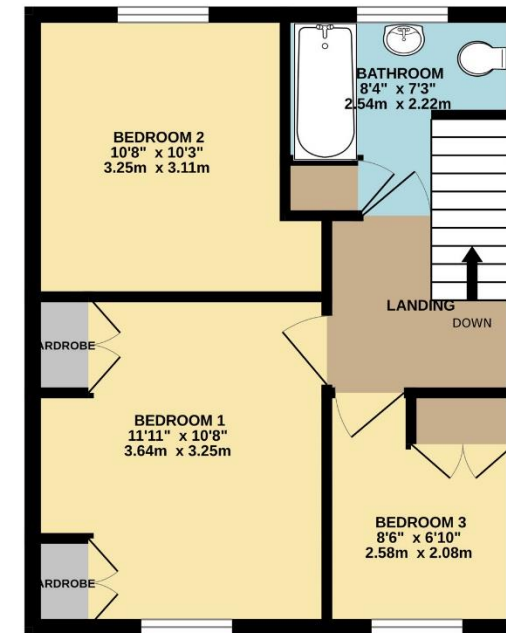
www.langtownandcountry.com



GROUND FLOOR
622 sq.ft. (57.8 sq.m.) approx.



1ST FLOOR
387 sq.ft. (35.9 sq.m.) approx.



TOTAL FLOOR AREA : 1009 sq.ft. (93.7 sq.m.) approx.
Measurements are approximate. Not to scale. Illustrative purposes only
Made with Metropix ©2024

Lang Town & Country
6 The Broadway
Plymouth
PL9 7AU
Tel: 01752 456000
Email: plymstock@langtownandcountry.com
www.langtownandcountry.com

Lang Town & Country endeavour to ensure the accuracy of property details produced and displayed, we have not tested any apparatus, equipment, fixtures, fittings or services and so cannot verify that they are connected, in working order or fit for purpose. A buyer must check the availability of any property and make an appointment to view before embarking on any journey to see a property.

