



30 Tucker Close, Weston Mill, Plymouth, Devon, PL5 1AW

LANG TOWN  
& COUNTRY

  
LANG TOWN  
& COUNTRY  
SALES

**Price £320,000**



Lang Town and Country are delighted to offer this deceptively spacious, extended, four/five -bedroom semi-detached house.

The property is situated in a delightful cul-de-sac location within easy access of the A38 which links Devon to Cornwall, and close to local amenities.

The property is set over four levels and comprises an entrance hall with steps to the upper and lower levels and access to bedroom four/study. On the lower level there is an impressive living room with dual window to the rear with an open outlook and a door to the kitchen. The kitchen is fully fitted with a stainless-steel sink unit, a range of base units with laminate worksurfaces and matching wall cupboards, with a door leading to the front and a door leading to the galvanised balcony and steps to the garden.

On the lower level there is a hallway with an opening to bedroom five with a door to the rear garden, also on this level is a shower room comprising a shower cubicle, wash hand basin W.C , plumbing for a washing machine and a boiler. This area has potential to be a separate annex.

On the upper level are the remaining three bedrooms, two of which have fitted wardrobes and all rooms have windows to the rear elevation with views over the surrounding woodlands. The family bathroom comprises a tiled bath, vanity unit, W.C , separate shower cubicle, tiled floor, and towel radiator.

Externally the front garden is laid to lawn with a driveway with parking for two /three cars. At the rear is a tiered garden with a large patio with access to a very useful garden room for storage. From the patio there are steps leading to the enclosed walled garden laid to lawn with a productive plumb tree.

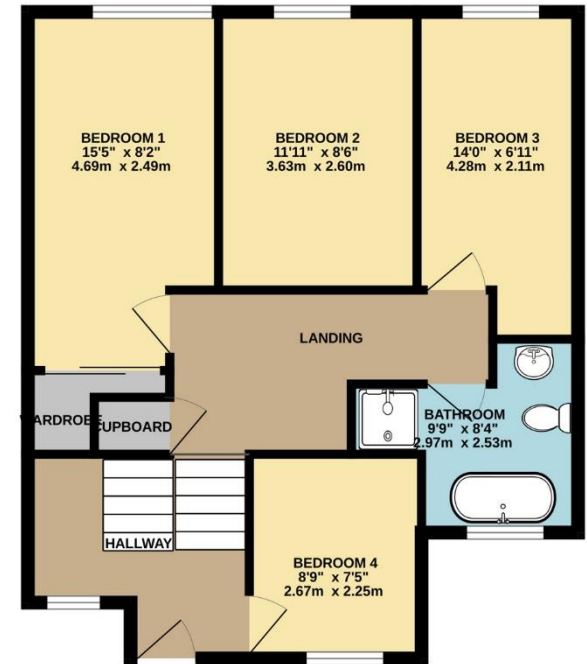
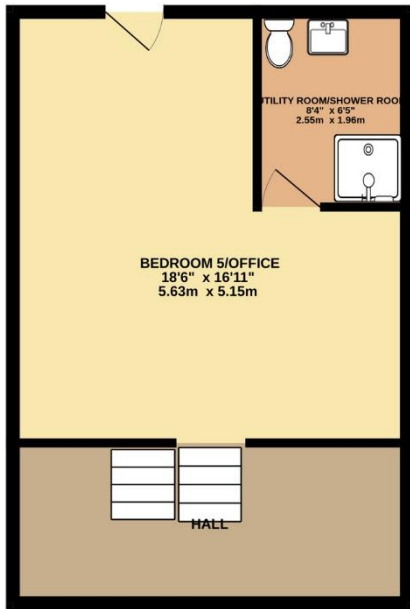
An early viewing is essential to appreciate this spacious family home in a great location.



To view this property call Lang Town & Country Estate Agents on **01752 256000**.

[www.langtownandcountry.com](http://www.langtownandcountry.com)





TOTAL FLOOR AREA : 1526 sq.ft. (141.8 sq.m.) approx.

Whilst every attempt has been made to ensure the accuracy of the floorplan contained here, measurements of doors, windows, rooms and any other items are approximate and no responsibility is taken for any error, omission or mis-statement. This plan is for illustrative purposes only and should be used as such by any prospective purchaser. The services, systems and appliances shown have not been tested and no guarantee as to their operability or efficiency can be given.  
Made with Metropix ©2023



Lang Town & Country  
6 Mannamead Road  
Mutley  
Plymouth  
PL4 7AA  
Tel: 01752 256000  
Email: [property@langtownandcountry.com](mailto:property@langtownandcountry.com)  
[www.langtownandcountry.com](http://www.langtownandcountry.com)

Lang Town & Country endeavour to ensure the accuracy of property details produced and displayed, we have not tested any apparatus, equipment, fixtures, fittings or services and so cannot verify that they are connected, in working order or fit for purpose. A buyer must check the availability of any property and make an appointment to view before embarking on any journey to see a property.

