



5 Mena Park Close, Elburton, Plymouth, Devon, PL9 8QB

Price £430,000



5 Mena Park Close is a stunning, extended 4-bedroom detached house located in a quiet cul-de-sac in Elburton, perfectly situated near the South Hams countryside and coastline.

This beautifully presented property offers ample room for a growing family with its modern open plan living area and is ideal for those seeking a comfortable space for the family with an extended, modern fitted kitchen with a range of integrated appliances. The property offers flexible accommodation with a ground floor bedroom come study and WC.

The first floor boasts 3 generous size bedrooms with the master having the benefit of a walk-in wardrobe that was formerly an en-suite shower room. The bedrooms are serviced by a luxury 3-piece bathroom suite. This charming property boasts ample parking and a detached garage.

To the rear of the property, you have a spacious garden perfect for entertaining family and friends complete with a versatile office or workshop space.

This family home is situated within close proximity to amenities and transport links. Elburton Village offers a wide array of shops to include a cooperative store, post office, butchers and bakers to name but a few. Transport links provide access to the Plymstock Broadway Shopping Centre and the vibrant city centre of Plymouth. Recreational facilities can be found close by to include Horsham Playing Fields and the stunning coastal walks that can be found at Wembury and Heybook Bay.

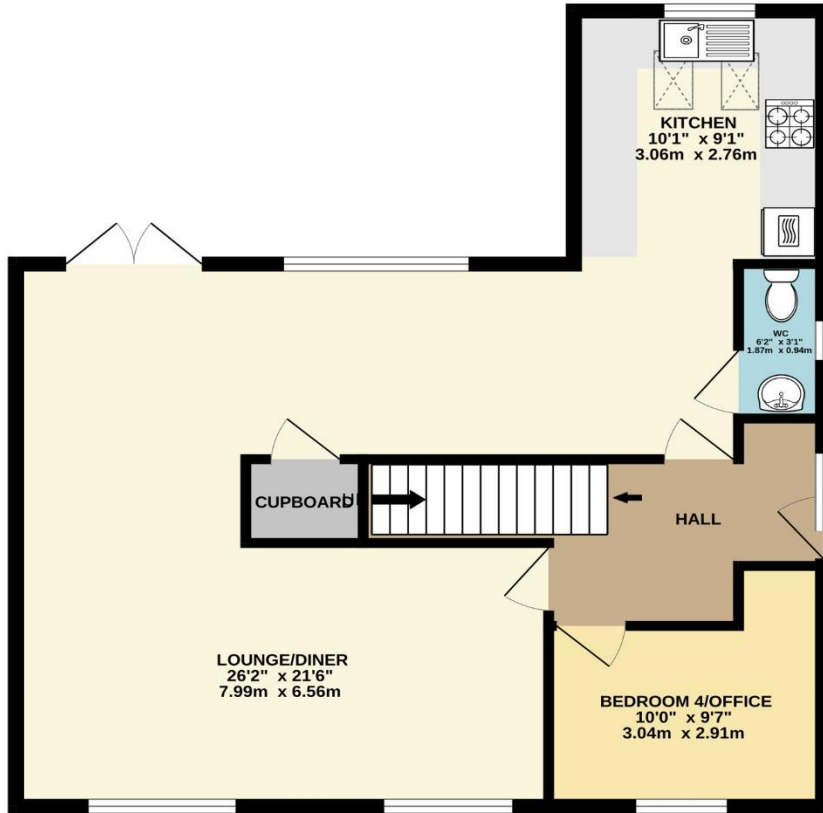


To view this property call Lang Town & Country Estate Agents on 01752 456000.

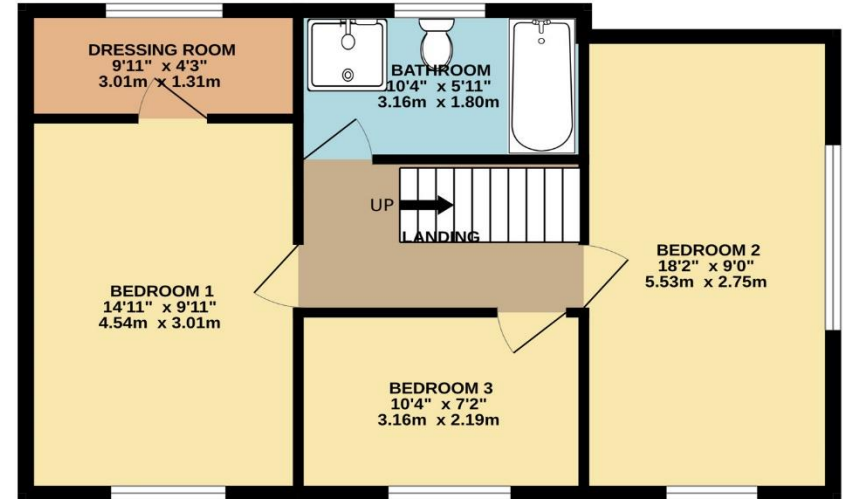
www.langtownandcountry.com



GROUND FLOOR
721 sq.ft. (67.0 sq.m.) approx.



1ST FLOOR
552 sq.ft. (51.3 sq.m.) approx.



TOTAL FLOOR AREA : 1273 sq.ft. (118.3 sq.m.) approx.
Measurements are approximate. Not to scale. Illustrative purposes only
Made with Metropix ©2023



Lang Town & Country
6 The Broadway
Plymstock
Plymouth
PL9 7AU
Tel: 01752 456000
Email: plymstock@langtownandcountry.com

Lang Town & Country endeavour to ensure the accuracy of property details produced and displayed, we have not tested any apparatus, equipment, fixtures, fittings or services and so cannot verify that they are connected, in working order or fit for purpose. A buyer must check the availability of any property and make an appointment to view before embarking on any journey to see a property.

