



58 Furzehatt Road, Plymstock, Plymouth, Devon, PL9 8QT



Price £385,000



Nestled in the heart of Plymstock is this extended 3-bedroom semi-detached family home on Furzehatt Road which offers a perfect blend of modern comfort and timeless charm. From the moment you step inside, you'll be captivated by the warm ambiance and thoughtful design.

The heart of the home is the extended kitchen/breakfast room. Fitted with contemporary appliances and a well-equipped range of wall and base units that are complimented by a central island. From the kitchen you have access to the shower room and WC. There are two spacious bay fronted reception rooms both of which have period features whilst the lounge has a feature fireplace with living flame gas fire.

On the first floor there are three generously sized bedrooms provide ample space for your family to grow and thrive & bedrooms 1 & 2 benefit from having fitted wardrobes. There is a beautifully presented bathroom with a three-piece suite that comprises of WC, wash hand basin and ball & claw foot roll edge bath.

To the front of the property, you have a driveway that provides parking and access to the garage. There is a small lawned garden with mature shrubs that provide privacy. Step outside into the rear garden there is a terrace that overlooks the garden and provides far reaching views. The generous size lawned garden is the perfect backdrop for family gatherings, summer barbecues, and a safe environment for children to play.

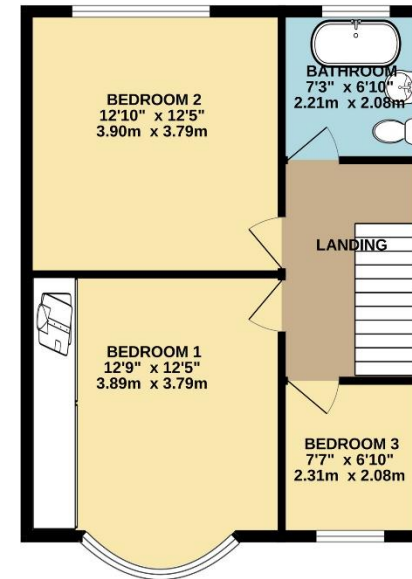
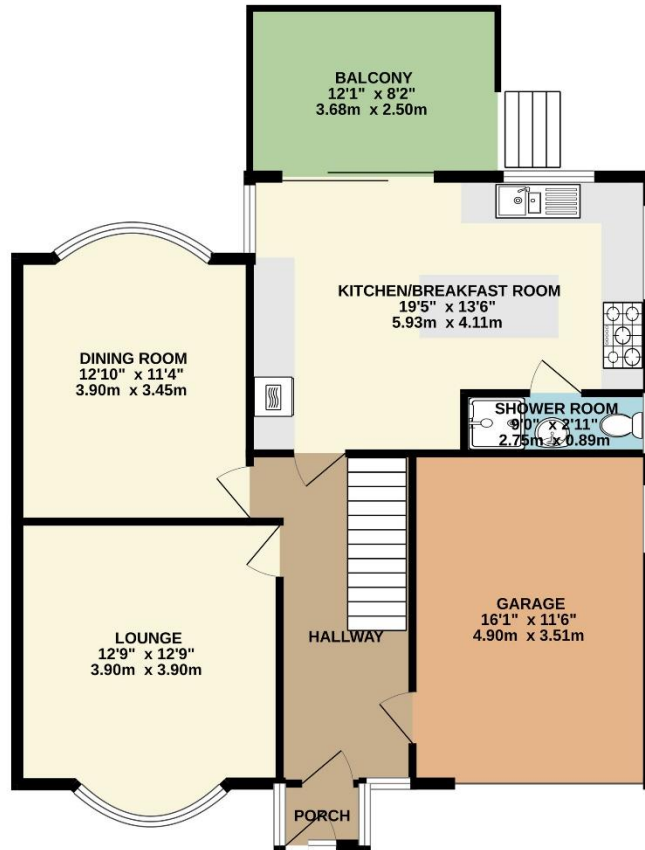
This property is close to an array of local amenities including the Broadway Shopping Centre, Doctor's Surgeries and Dental Surgeries. Recreational facilities can be found close by to include the Mount Batten Water Sports Centre, Staddon Heights Golf Course and the picturesque countryside and coastlines found at the South Hams which offers stunning walks along the South West coastal path. Transport links provide access to the vibrant Plymouth City Centre and the South Hams.



To view this property call Lang Town & Country Estate Agents on 01752 456000.

www.langtownandcountry.com





TOTAL FLOOR AREA : 1395 sq.ft. (129.6 sq.m.) approx.
Measurements are approximate. Not to scale. Illustrative purposes only
Made with Metropix ©2023



Lang Town & Country
6 The Broadway
Plymstock
Plymouth
PL9 7AU
Tel: 01752 456000
Email: plymstock@langtownandcountry.com

Lang Town & Country endeavour to ensure the accuracy of property details produced and displayed, we have not tested any apparatus, equipment, fixtures, fittings or services and so cannot verify that they are connected, in working order or fit for purpose. A buyer must check the availability of any property and make an appointment to view before embarking on any journey to see a property.

