



'Oakfield', 72 Larkham Lane, Plympton, Plymouth, Devon, PL7 4PN



# Guide Price £1,000,000



Introducing this exceptional and truly impressive, spacious, luxury living five-bedroom detached family home, impeccably presented throughout, offering luxurious living spaces and modern conveniences.

This stunning home boasts impeccable craftsmanship and high-end finishes throughout. Upon entering the grand foyer, guests are greeted by a central French oak staircase, a wonderful, glazed wall letting in an abundance of light. There is a sitting room with French doors and a further living room perfect for entertaining or relaxing.

The heart of the home lies in the breathtaking open plan kitchen/diner/family boasting contemporary design and high-end appliances, showcasing top-of-the-line kitchen units, a chef's island with an AEG hob and downdraft extractor and a Quooker tap. This space is ideal has two large picture windows making this a wonderful light and airy space for family meals or gatherings with friends.

The property features a convenient utility room and a W/C on the ground floor. On the first floor, there are five generously sized bedrooms, with the master having a vaulted ceiling, a Juliet balcony and a dressing room with fitted wardrobes. There is an en-suite shower room and a separate luxury bathroom with elegant design and offers a tranquil space for relaxation.

Externally, the property benefits from a beautifully landscaped garden, providing a peaceful retreat with its lush greenery and well-maintained borders. The garden is complemented by a spacious driveway providing ample parking space and private gates ensuring security and exclusivity. Additionally, the property includes an integral triple garage, providing further parking or storage options.

Located in a desirable area, this property offers a perfect blend of luxury, comfort, and functionality, making it an ideal family home. Don't miss the opportunity to make this exquisite property yours.



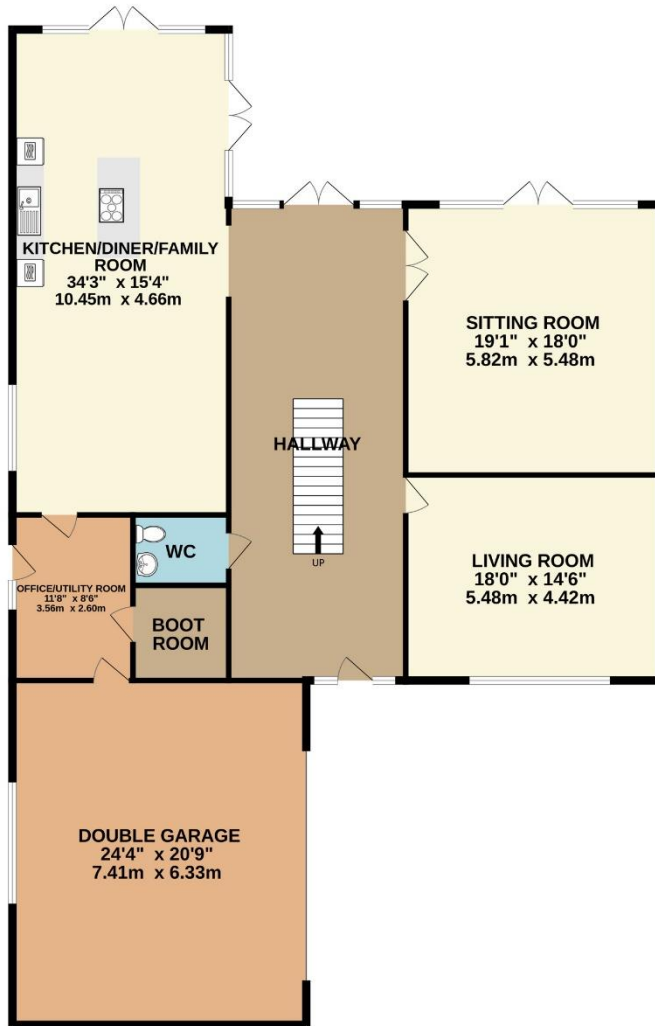
To view this property call Lang Town & Country Estate Agents on **01752 256000**



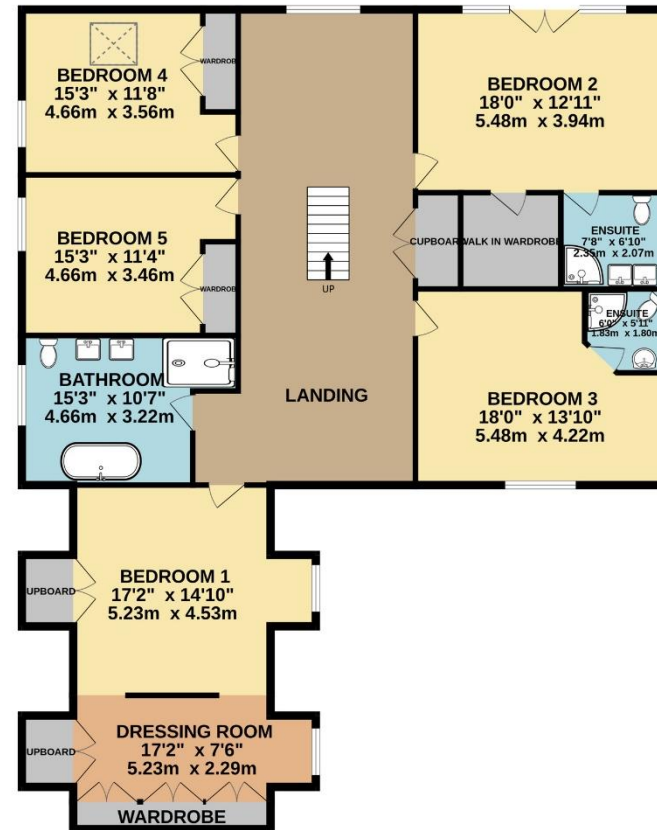




GROUND FLOOR  
2233 sq.ft. (207.4 sq.m.) approx.



1ST FLOOR  
1946 sq.ft. (180.8 sq.m.) approx.



TOTAL FLOOR AREA : 4179 sq.ft. (388.2 sq.m.) approx.  
Measurements are approximate. Not to scale. Illustrative purposes only  
Made with Metropix ©2024



# Guide Price £1,000,000

Oakfield, 72 Larkham Lane, Plympton, Plymouth, Devon, PL7 4PN

LANG TOWN  
& COUNTRY  
SALES



Lang Town & Country  
6 Mannamead Road,  
Mannamead Plymouth Devon PL4 7AA  
Tel: 01752 256000  
Email: [property@langtownandcountry.com](mailto:property@langtownandcountry.com)  
[www.langtownandcountry.com](http://www.langtownandcountry.com)

Lang Town & Country endeavour to ensure the accuracy of property details produced and displayed, we have not tested any apparatus, equipment, fixtures, fittings or services and so cannot verify that they are connected, in working order or fit for purpose. A buyer must check the availability of any property and make an appointment to view before embarking on any journey to see a property.

