



7 Thornbury Park Avenue, Peverell, Plymouth, PL3 4NJ



Price £295,000

Lang Town and Country are pleased to offer this delightful, well maintained three bedroomed terraced home with a garage.

Occupying a fabulous and sought-after location close to Central Park, the impressive Life Centre, Montpelier Primary School, Devonport High School for Girls and with easy access to the Parkway and, regular public transport to the City Centre less than two miles distant. This is a wonderful opportunity to acquire a lovely family home, situated within a highly desirable, tree lined, 'Park Avenue.

The property is beautifully presented throughout and has the charm and ambience as typified by this era with character features including mosaic tiling, balustrade staircase, ornate ceiling mouldings and stripped doors.

The accommodation comprises, on the ground floor, of an entrance vestibule, a hall, sitting room with feature log burner and an opening through to the kitchen/diner. The modern kitchen has a range of fitted units with wooden work tops, integrated appliances, ceramic sink unit with drainer and mixer tap, double oven, induction hob, washer/dryer and dishwasher. From the dining room there is a delightful sunroom which in turn leads out onto the rear courtyard.

On the first floor there are three bedrooms, two with built-in storage, and a modern bathroom with three-piece suite including low level w.c., vanity wash hand basin and a bath with centre taps and a shower over.

Externally there is a small frontage, whilst to the rear there is an enclosed courtyard garden, with a variety of shrubs in raised beds, built in seating, a walled boundary and access to the rear service lane. One of the most important features of this amazing property is the single garage.

An early viewing is highly recommended to appreciate this fabulous property in a great location.

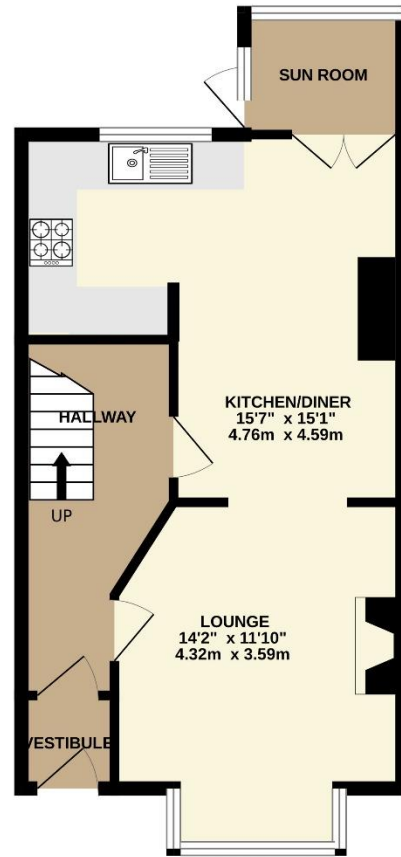
To view this property call Lang Town & Country Estate Agents on **01752 256000**.

www.langtownandcountry.com

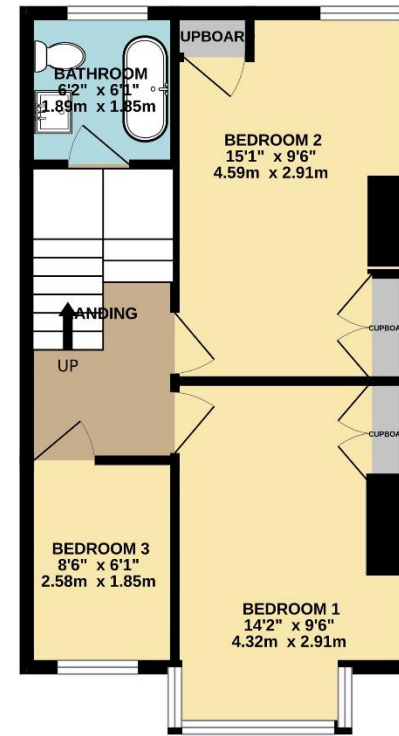




GROUND FLOOR
453 sq.ft. (42.0 sq.m.) approx.



1ST FLOOR
424 sq.ft. (39.4 sq.m.) approx.



TOTAL FLOOR AREA : 877 sq.ft. (81.4 sq.m.) approx.

Whilst every attempt has been made to ensure the accuracy of the floorplan contained here, measurements of doors, windows, rooms and any other items are approximate and no responsibility is taken for any error, omission or mis-statement. This plan is for illustrative purposes only and should be used as such by any prospective purchaser. The services, systems and appliances shown have not been tested and no guarantee as to their operability or efficiency can be given.
Made with Metropix ©2024.

Lang Town & Country
6 Mannamead Road
Mutley
Plymouth
PL4 7AA
Tel: 01752 256000
Email: property@langtownandcountry.com

Lang Town & Country endeavour to ensure the accuracy of property details produced and displayed, we have not tested any apparatus, equipment, fixtures, fittings or services and so cannot verify that they are connected, in working order or fit for purpose. A buyer must check the availability of any property and make an appointment to view before embarking on any journey to see a property.

