



LANG TOWN
& COUNTRY

SALES

50 Douglass Road, Efford, Plymouth, Devon, PL3 6NP



Price £175,000



Lang Town and Country are delighted to offer this modern two-bedroom mid terraced house positioned at the end of a peaceful cul-de-sac. Benefitting from allocated parking to the front and ample rear outdoor space, This is ideal first time buy, or investment.

Located within easy reach to a host of local amenities, reputable schools, and transport links. This property position provides direct access to both the city centre and the A38 and occupies a delightful position on the estate overlooking a green space.

Accommodation briefly comprises of an entrance porch with a large storage cupboard leading into a to a spacious lounge, with a feature fireplace with a living flame gas fire and patio doors leading to the rear garden. To complete the downstairs is a modern fitted kitchen with a range of wall and base units, fitted oven and washing machine and a double-glazed window overlooking the green. double glazed window to the front.

Upstairs the first-floor landing leads you too two bedrooms which are both ample sized and have a double-glazed window to the rear aspect and a modern family bathroom comprising; Bath, overhead shower, W.C and basin.

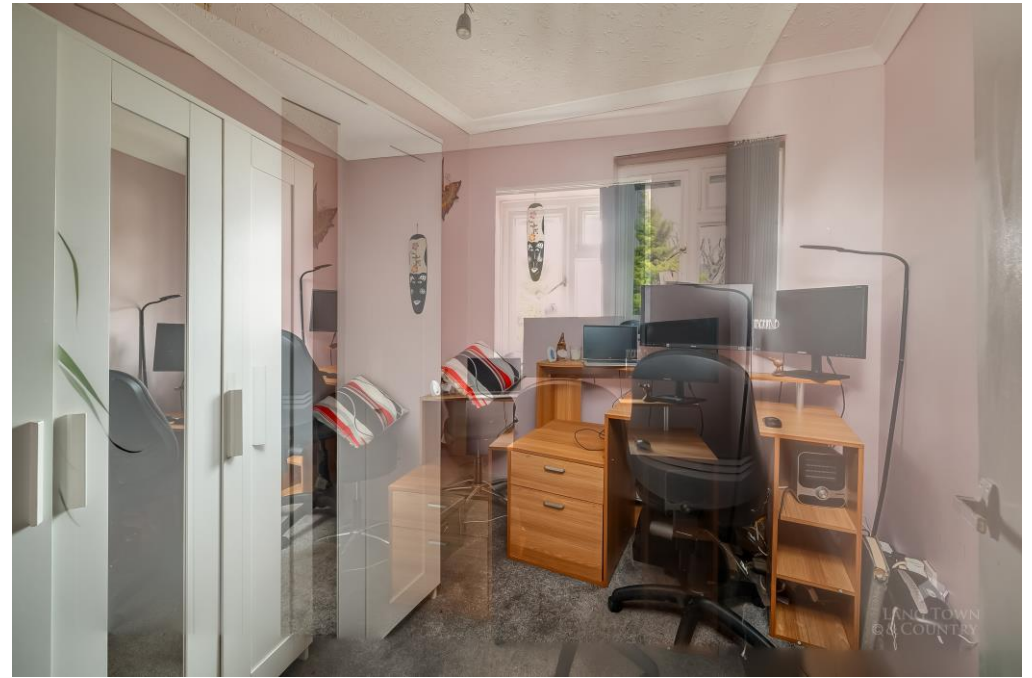
To the rear the property benefits from a level rear garden which has paved patio and gravelled area, which is perfect for entertaining in the summer months. There is also a useful storage unit, with the additional benefit of allocated parking to the front.

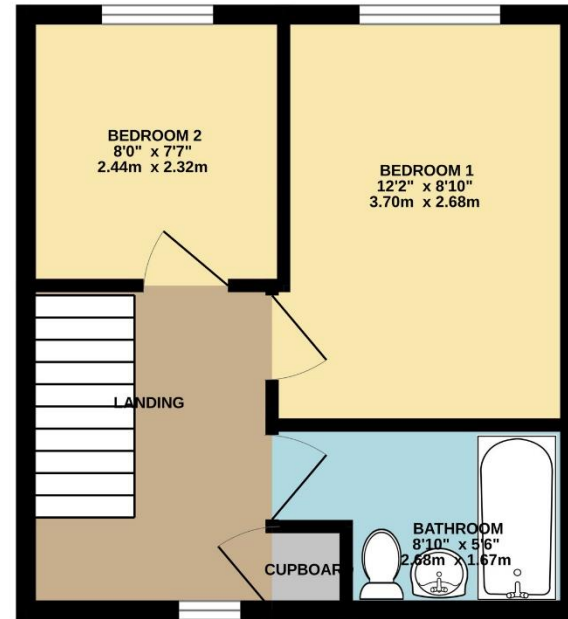
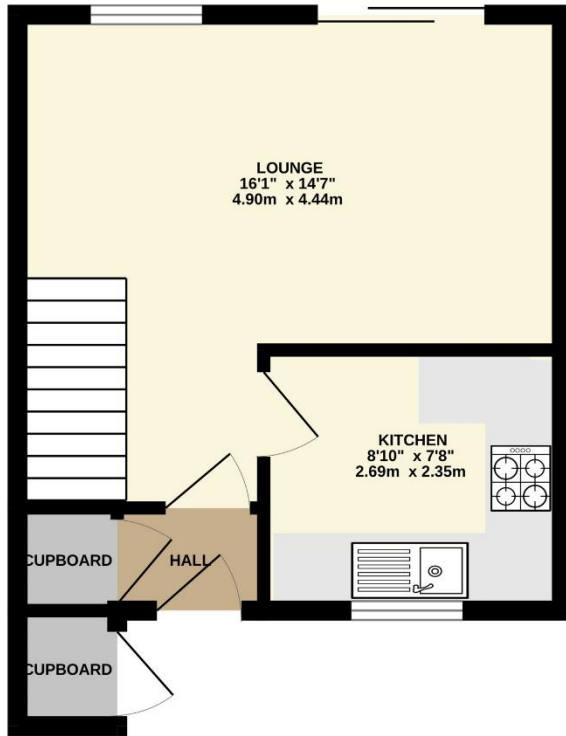
An early internal viewing is essential to appreciate this great property in a lovely position.



To view this property call Lang Town & Country Estate Agents on **01752 256000**

www.langtownandcountry.com





TOTAL FLOOR AREA : 576 sq.ft. (53.5 sq.m.) approx.

Whilst every attempt has been made to ensure the accuracy of the floorplan contained here, measurements of doors, windows, rooms and any other items are approximate and no responsibility is taken for any error, omission or mis-statement. This plan is for illustrative purposes only and should be used as such by any prospective purchaser. The services, systems and appliances shown have not been tested and no guarantee as to their operability or efficiency can be given.
Made with Metropix ©2024

Lang Town & Country
6 Mannamead Road
Plymouth
PL4 7AA
Tel: 01752 256000
Email: property@langtownandcountry.com
www.langtownandcountry.com

Lang Town & Country endeavour to ensure the accuracy of property details produced and displayed, we have not tested any apparatus, equipment, fixtures, fittings or services and so cannot verify that they are connected, in working order or fit for purpose. A buyer must check the availability of any property and make an appointment to view before embarking on any journey to see a property.

