



3 Tulip Lane, Sherford, Plymouth, Devon, PL9 8WN



Price £270,000



This charming three-bedroom end terraced home is situated in the heart of the sought-after modern development of Sherford. This beautifully designed property offers a perfect blend of contemporary living and comfort, ideal for families, first-time buyers, or those looking to downsize.

Inside, you'll find a spacious and light-filled living room, a modern fitted kitchen breakfast room with integrated appliances. On the first floor the property boasts three well-proportioned bedrooms, including a modern three-piece family bathroom suite.

Externally the property benefits from a private rear garden with side access and allocated parking.

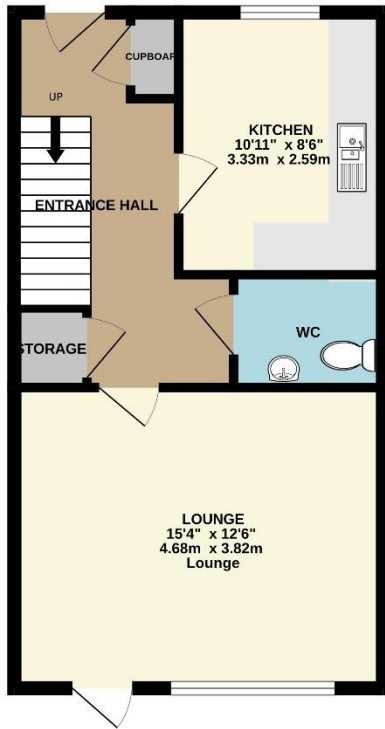
Located within the growing Sherford community, this home offers easy access to local amenities, schools, and green spaces, all while being conveniently close to major transport links, A38 and local amenities.



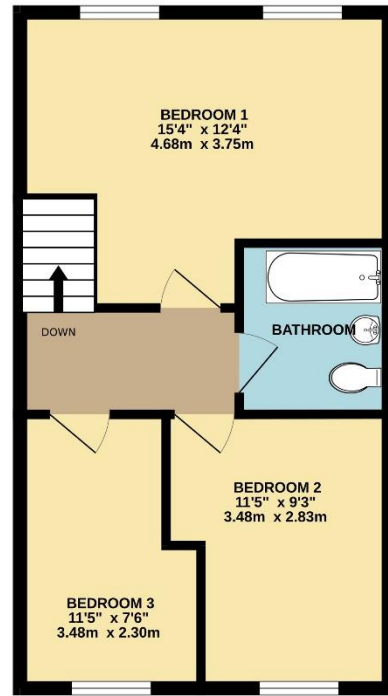
To view this property call Lang Town & Country Estate Agents on **01752 456000**



GROUND FLOOR
433 sq.ft. (40.2 sq.m.) approx.



1ST FLOOR
433 sq.ft. (40.2 sq.m.) approx.



TOTAL FLOOR AREA : 865 sq.ft. (80.4 sq.m.) approx.
Measurements are approximate. Not to scale. Illustrative purposes only
Made with Metropix ©2024.



Lang Town & Country
6 The Broadway
Plymouth
PL9 7AU
Tel: 01752 456000
Email: plymstock@langtownandcountry.com
www.langtownandcountry.com

Lang Town & Country endeavour to ensure the accuracy of property details produced and displayed, we have not tested any apparatus, equipment, fixtures, fittings or services and so cannot verify that they are connected, in working order or fit for purpose. A buyer must check the availability of any property and make an appointment to view before embarking on any journey to see a property.

