



20 Donnington Drive, Higher Compton, Plymouth, Devon, PL3 6QS



Guide Price £280,000



Lang town and Country are delighted to offer this extended, semi-detached house, situated in a very popular residential area. The property has been well maintained over the years and would make an ideal family home. The property is situated close to all local amenities such as local shops good schools and within easy access of Plymouth City Centre and the A38.

The accommodation comprises an entrance porch which leads you directly into the living space. The lounge has a fireplace and a window the front and opens onto the dining room with French doors leading to a secluded patio. There is a convenient cloakroom with access from the dining room. The spacious kitchen /diner is fully fitted with a range of base units with laminate worksurfaces and a bowl and a half, inset sink unit, matching wall cupboards, tiled floor, and dual windows to the rear, with an open outlook towards Dartmoor national Park.

On the first floor there are four bedrooms, separate W.C and a modern bathroom.

Externally there is a front garden with a driveway giving access to the garage. To the rear is an enclosed garden with two raised patio areas lawned area and access to a cellar for storage.

The property benefits from double glazed windows and gas central heating.

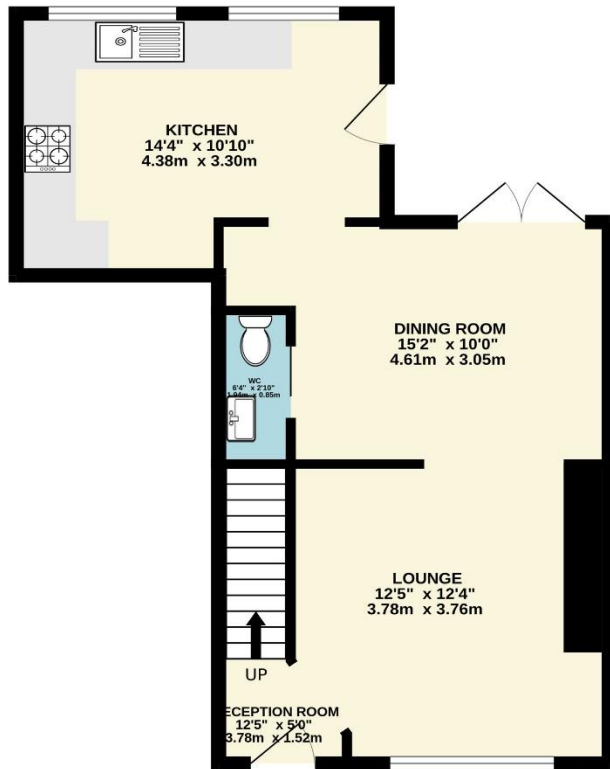
An early viewing is essential to appreciate this great family home in a superb location.



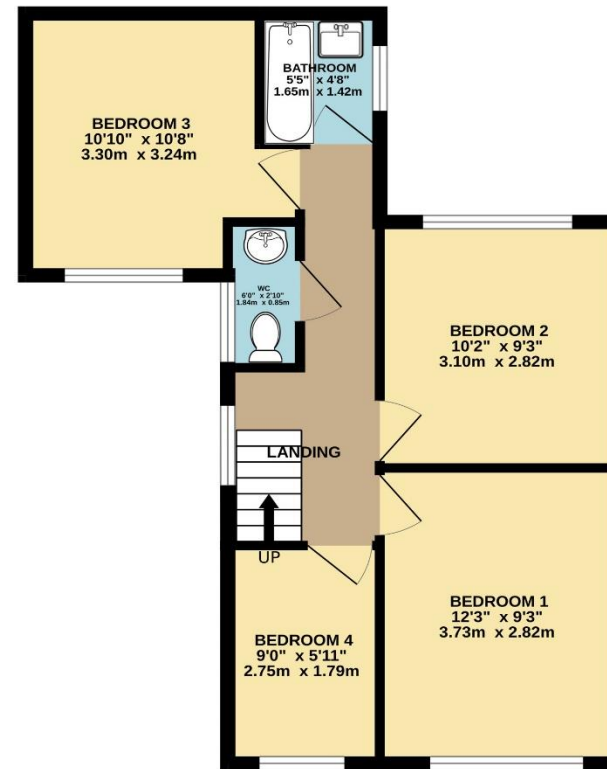
To view this property call Lang Town & Country Estate Agents on **01752 256000**.



GROUND FLOOR
469 sq.ft. (43.6 sq.m.) approx.



1ST FLOOR
475 sq.ft. (44.1 sq.m.) approx.



TOTAL FLOOR AREA : 944 sq.ft. (87.7 sq.m.) approx.

Whilst every attempt has been made to ensure the accuracy of the floorplan contained here, measurements of doors, windows, rooms and any other items are approximate and no responsibility is taken for any error, omission or mis-statement. This plan is for illustrative purposes only and should be used as such by any prospective purchaser. The services, systems and appliances shown have not been tested and no guarantee as to their operability or efficiency can be given.
Made with Metropix ©2024



Lang Town & Country
6 Mannamead road
Mannamead
Plymouth
PL4 7AA
Tel: 01752 256000
Email: property@langtownandcountry.com
www.langtownandcountry.com

Lang Town & Country endeavour to ensure the accuracy of property details produced and displayed, we have not tested any apparatus, equipment, fixtures, fittings or services and so cannot verify that they are connected, in working order or fit for purpose. A buyer must check the availability of any property and make an appointment to view before embarking on any journey to see a property.

