



LANG TOWN
& COUNTRY

4 Halecombe Road, Saltram Meadow, Plymouth, Devon, PL9 7FQ



Price £275,000



Located in the popular modern development of Saltram Meadow is this well presented three-bedroom end of terrace house. The property is situated on the outskirts of the development and offers easy access to the picturesque walks along the Plym Estuary and the grounds of Saltram House.

The property comprises on the ground floor of an open plan living room that opens onto the kitchen. The kitchen has a range of integrated appliances including hob, oven, dishwasher and fridge freezer. Patio doors provide access to the conservatory that overlooks the rear garden. Also, on the ground floor there is a cloakroom with WC & wash hand basin.

On the first floor there are three bedrooms with the master benefiting from fitted wardrobes and an en-suite shower room. The second bedroom has wardrobes. There is also bathroom with a modern 3-piece suite.

To the front of the property, you have a small garden with railings and gate that lead to front entrance. To the rear there is a low maintenance garden that offers a safe and secure space for children and the perfect place for family & friends. A gate leads to the rear where you will find a garage and driveway.

This family home is ideally located close to popular schooling and amenities comprising Morrison's Superstore, popular schooling, Doctor's, and dental surgeries. Transport links provide access to the Broadway Shopping Centre, the vibrant city centre of Plymouth and the beautiful South Hams countryside and coastline. Recreational facilities can be found at Staddon Heights Golf Course, Jennycliff and the Mount Batten Water Sports Centre.

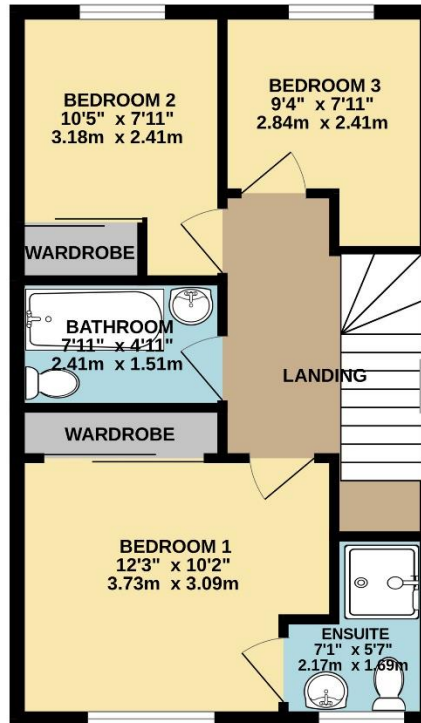
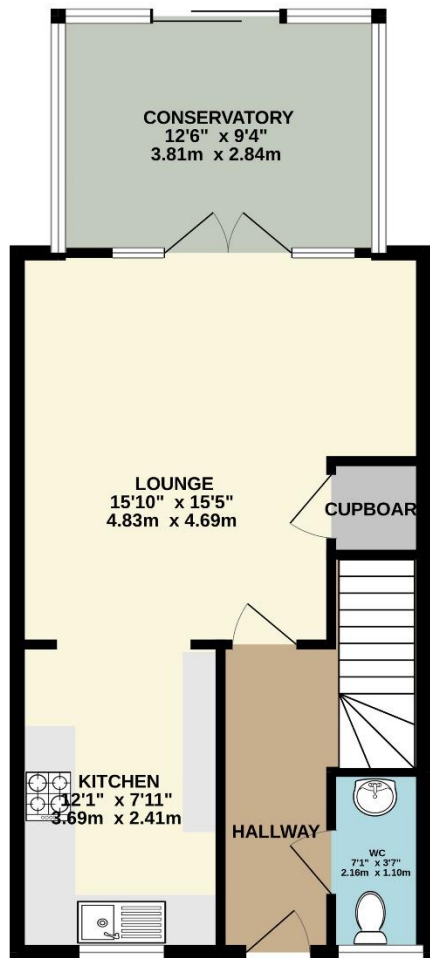
The property has gas central heating and uPVC double glazing. A viewing should be arranged at the earliest opportunity to appreciate the accommodation and location that is on offer.

AGENTS NOTE: The development is run by a management company and there is a yearly charge for the maintenance and upkeep of the estate. The details of which should be confirmed by your solicitor.



To view this property call Lang Town & Country Estate Agents on **01752 256000**.





TOTAL FLOOR AREA : 987 sq.ft. (91.7 sq.m.) approx.
Measurements are approximate. Not to scale. Illustrative purposes only
Made with Metroplan ©2024



Lang Town & Country
6 Mannamead road
Mannamead
Plymouth
PL4 7AA

Tel: 01752 256000

Email: property@langtownandcountry.com

www.langtownandcountry.com

Lang Town & Country endeavour to ensure the accuracy of property details produced and displayed, we have not tested any apparatus, equipment, fixtures, fittings or services and so cannot verify that they are connected, in working order or fit for purpose. A buyer must check the availability of any property and make an appointment to view before embarking on any journey to see a property.

