



1 Finches Close, Elburton, Plymouth, PL9 8DP



# Price £395,000

Located in a popular residential cul-de-sac is this deceptively spacious 3/4-bedroom detached bungalow. The property occupies a generous size, level sited, low maintenance plot with ample parking and garage.

The property offers flexible accommodation throughout with three bedrooms a lounge with feature fireplace, a separate dining room, a kitchen with a range of fitted wall and base units, utility, bathroom and separate WC. This property would also suit someone who requires four bedrooms.

Externally the property has a low maintenance gravelled front and rear garden and a driveway driving parking and access to the garage.

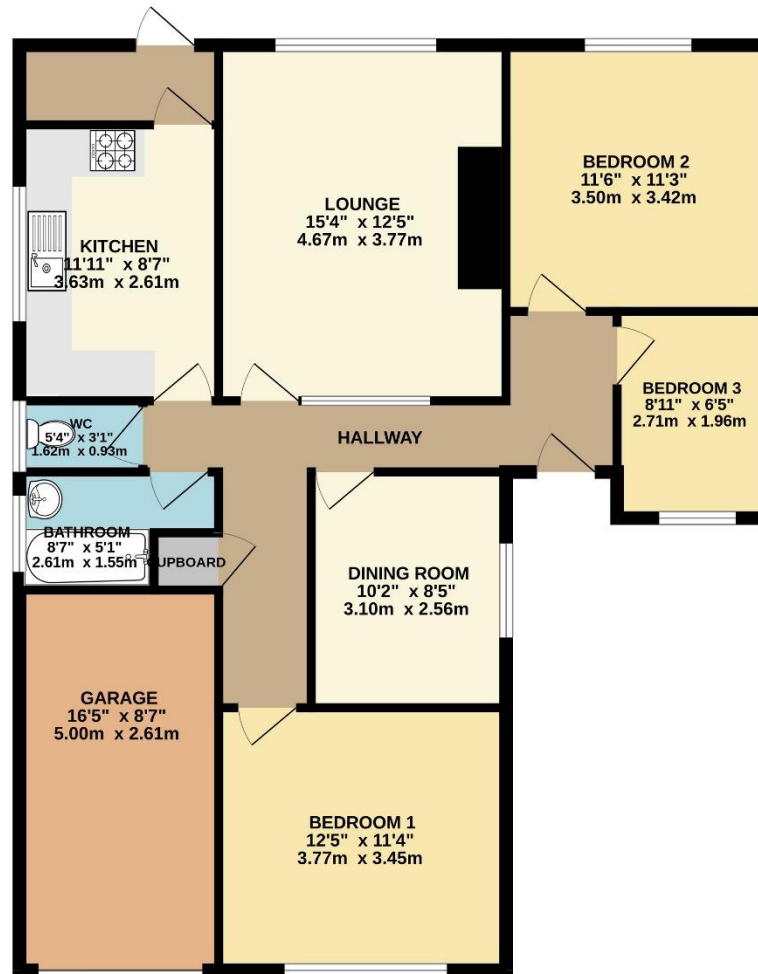
Located a short distance from Elburton Village, the property provides easy access to the wide range of amenities on offer and a regular bus service to Plymstock, Plymouth City Centre and the picturesque South Hams Countryside & Coastline. The property has a modern fitted kitchen and is double glazed with gas central heating.



To view this property call Lang Town & Country Estate Agents on 01752 456000.

[www.langtownandcountry.com](http://www.langtownandcountry.com)





TOTAL FLOOR AREA : 1055 sq.ft. (98.0 sq.m.) approx.  
 Measurements are approximate. Not to scale. Illustrative purposes only  
 Made with Metropix ©2024



Lang Town & Country

6 The Broadway

Plymstock

Plymouth

PL9 7AU

Tel: 01752 456000

Email: [plymstockoffice@langtownandcountry.com](mailto:plymstockoffice@langtownandcountry.com)

Lang Town & Country endeavour to ensure the accuracy of property details produced and displayed, we have not tested any apparatus, equipment, fixtures, fittings or services and so cannot verify that they are connected, in working order or fit for purpose. A buyer must check the availability of any property and make an appointment to view before embarking on any journey to see a property.



YouTube