

# £875,000

Four Bedrooms  
Freehold

## Blagdon Road

New Malden  
KT3 4AL

# FARLEYWOOD

- Deceptively spacious, stylish & immaculate
- Extended ground floor with Neptune kitchen, under floor heating and utility room
- Principal bedroom with large walk-in wardrobe and generous ensuite
- Two modern bathrooms plus ground floor WC
- Located moments from Burlington Infant School (Rated Outstanding by Ofsted)
- Close to Beverley Park
- Excellent transport and local amenities close by

A tastefully decorated, wider-than average period property, that has been thoughtfully extended to provide a modern, practical and spacious family home. Located on a tree-lined, residential road, moments from Burlington Primary School and close to the station and the many amenities of New Malden high street.

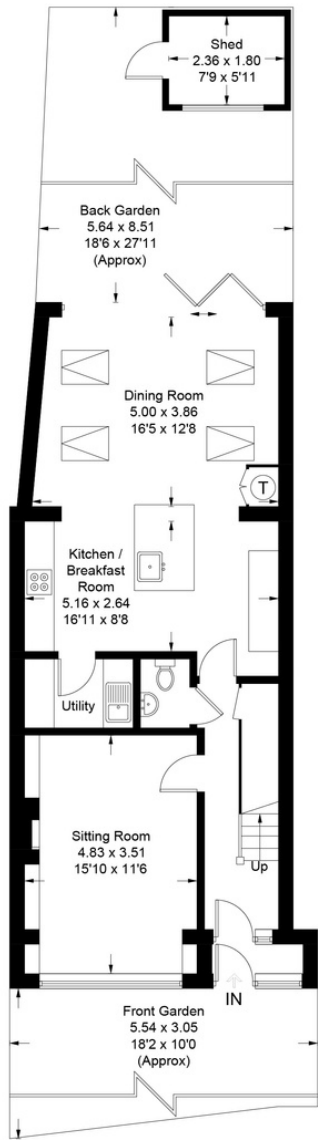
Viewing by appointment only  
[www.farleywood.com](http://www.farleywood.com)



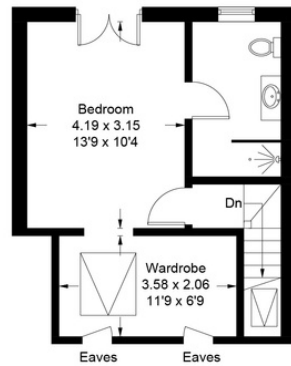




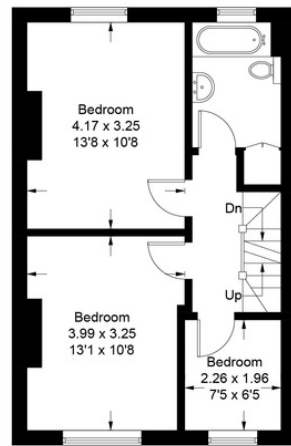
Approximate Gross Internal Area = 143 sq m / 1539 sq ft  
 Shed = 4.2 sq m / 45 sq ft  
 Total = 147.2 sq m / 1584 sq ft



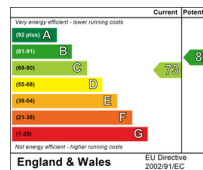
Ground Floor



Second Floor



First Floor



In close proximity to the large open space of Beverley Park this family home also benefits from nearby Richmond Park and Wimbledon Common. Blagdon Road has a welcoming community spirit and New Malden has fantastic sports facilities, golf courses, farmers market, restaurants, local shops, supermarkets, pubs and cafes. This property is in the catchment for highly sought-after primary and secondary schools, most notably the Outstanding Ofsted rated Burlington Infant school. Nearby secondary schools include Coombe Girls, Coombe Boys, Holy Cross, Richard Challoner and various highly sought- after grammar schools.

Start your moving story today by contacting FarleyWood. EPC Rating C & Council Tax Band E

This plan is for layout guidance only. Not drawn to scale unless stated. Windows and door openings are approximate. Whilst every care is taken in the preparation of this plan, please check all dimensions, shapes and compass bearings before making decisions reliant upon them. (ID759446)