

29 Bellever Close, Princetown, Yelverton, PL20 6RT

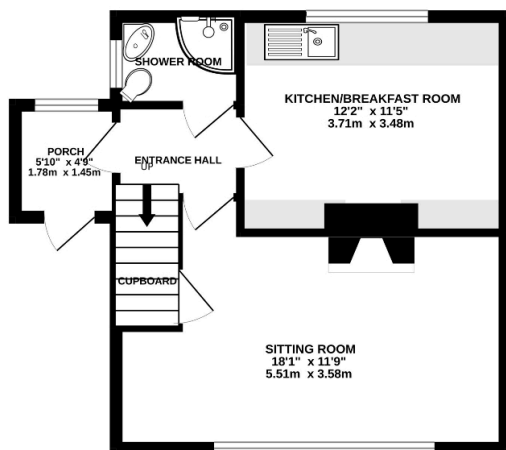
£145,000

3 1 1

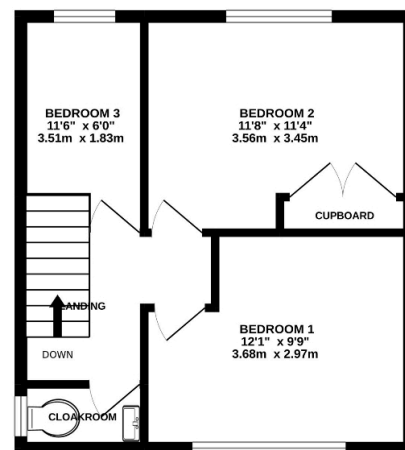


- Semi Detached House
- Three Bedrooms
- Living Room
- Kitchen/Breakfast Room
- Well Established Gardens
- Driveway For Two Cars
- Dartmoor Village Location
- Cornish Unit Construction (Cash Buyers Only)
- No Onward Chain
- Band 'E' rating 48

GROUND FLOOR



1ST FLOOR



BELLEVER CLOSE, PRINCETOWN, PL20

Whilst every attempt has been made to ensure the accuracy of the floorplan contained here, measurements of doors, windows, rooms and any other items are approximate and no responsibility is taken for any error, omission or mis-statement. This plan is for illustrative purposes only and should be used as such by any prospective purchaser. The services, systems and appliances shown have not been tested and no guarantee as to their operability or efficiency can be given.
Made with Metropix ©2022

Cash Buyers Only* Ideal Investment Opportunity* Affordable Home An opportunity to acquire a three bedroom semi detached house with driveway providing off road parking for two vehicles with well established gardens situated in the historic village of Princetown In the heart of Dartmoor National Park offered to the market with no onward chain.