

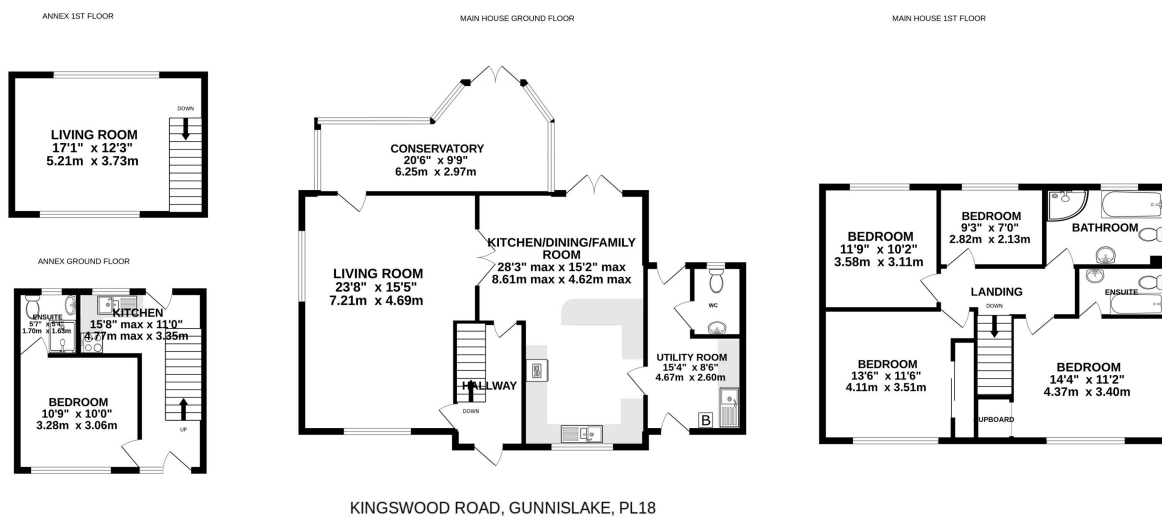
The Willows, Kingswood Road, PL18 9DF

Guide Price £725,000

5 3 3



- HIDDEN GEM!
- Private location at the end of a 'no through' lane.
- Main house has spacious accommodation.
- Adjoining annexe has Lounge, kitchen, double bedroom and en suite.
- Several useful outbuildings with light and power.
- Lovely four bedroom family home with Annexe
- Approaching two acres of garden and pasture.
- 2/3 receptions, Kitchen/dining room and utility, cloakroom. 4 bedrooms and 2 bathrooms.
- Driveway parking.
- EPC House Rating 86, Band 'B'. Annexe Rating 62, Band 'D'. \*NO ONWARD CHAIN\*



Whilst every attempt has been made to ensure the accuracy of the floorplan contained here, measurements of doors, windows, rooms and any other items are approximate and no responsibility is taken for any error, omission or mis-statement. This plan is for illustrative purposes only and should be used as such by any prospective purchaser. The services, systems and appliances shown have not been tested and no guarantee as to their operability or efficiency can be given.  
Made with Metropix ©2022

A 'hidden gem' in the Tamar Valley. This fantastic family home with Annexe enjoys a peaceful location along a no-through lane and has the benefit of beautiful gardens and land approaching two acres adjoining the river Tamar. The spacious accommodation comprises; Hall, Living room, conservatory, Kitchen/dining room, utility, Cloakroom. Four double bedrooms, ensuite bathroom and family bathroom. A one bedroom Annexe. Secluded gardens and pasture with useful outbuildings to include workshop and barn. \*NO ONWARD CHAIN\*.