

## Tor View, Near St Dominick, PL12

Guide Price £465,000

3 2 3



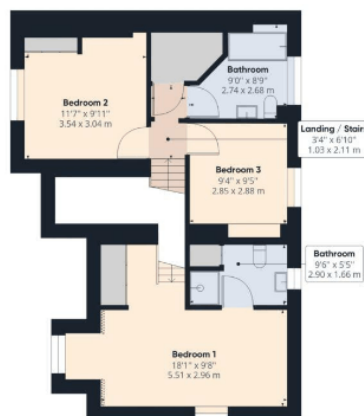
An elegant double fronted Edwardian residence nestling in abundantly stocked cottage style gardens with stunning 360 degree countryside views over the Tamar Valley and towards Plymouth Sound National Marine Park. The property offers ample parking with direct access to a detached double garage/workshop and is situated in a idyllic semi rural location. Viewing Highly Recommended.

## Key Features

- Elegant Period Home
- Spacious Kitchen With Adjoining Dining Room
- Large Sitting Room With Bay Window
- Three Generously Sized Bedrooms
- Good sized Family Bathroom
- Porch, Entrance Hall and Cloakroom
- Separate Utility/Boot Room
- Edwardian Style Conservatory
- En-suite To Master Bedroom
- Stunning Gardens and Panoramic Views over Surrounding Countryside



Floor 0



Floor 1