



DAVIDSONS
HOMES

THE DUDLEY
2 BEDROOM
SEMI-DETACHED
HOME

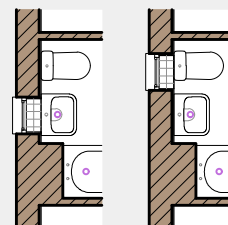
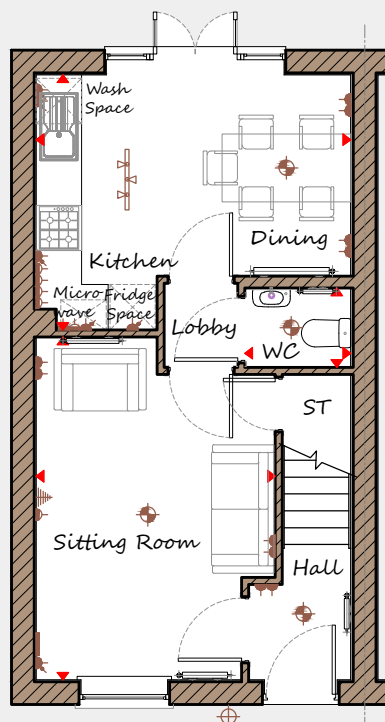
An exclusive opportunity to own
a desirable new property that
provides comfortable living with
craftsmanship of the highest calibre.

DH200GE-4
[728]
Rev C01

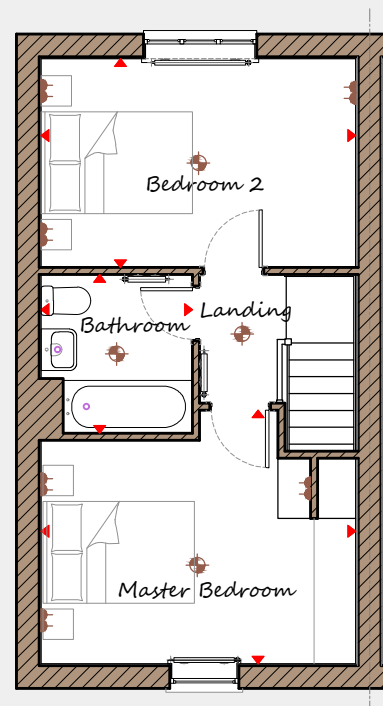


DAVIDSONS HOMES

THE DUDLEY FLOOR PLANS



Optional Window
(Refer to Site Layout)



Ground Floor

Sitting Room	3160	x	4535	10'4"	x	14'11"
Kitchen/Dining	4160	x	3375	13'8"	x	11'1"
WC	1400	x	1050	4'7"	x	3'5"

First Floor

Master Bedroom	4160	x	3355	13'8"	x	11'0"
Bedroom 2	4160	x	2760	13'8"	x	9'1"
Bathroom	2000	x	2100	6'7"	x	6'11"

Key	Dimension location	External light	Ceiling light	Downlight
	3 bar light	Radiator	TV aerial	Media plate
	Double socket	High double socket	Low socket	High socket

This is an artistic interpretation, variations in elevational styles, finishes and floor plans may vary. Please consult with your Sales Manager for details of the development and plot. Measurements provided are within + or - 50mm.



Davidsons Homes.
Wilson House, Leicester Road,
Ibstock, Leicestershire, LE67 6HP
T: 01530 261 444
www.davidsonsgroup.co.uk