





# Dittisham Road, Mottingham, SE9

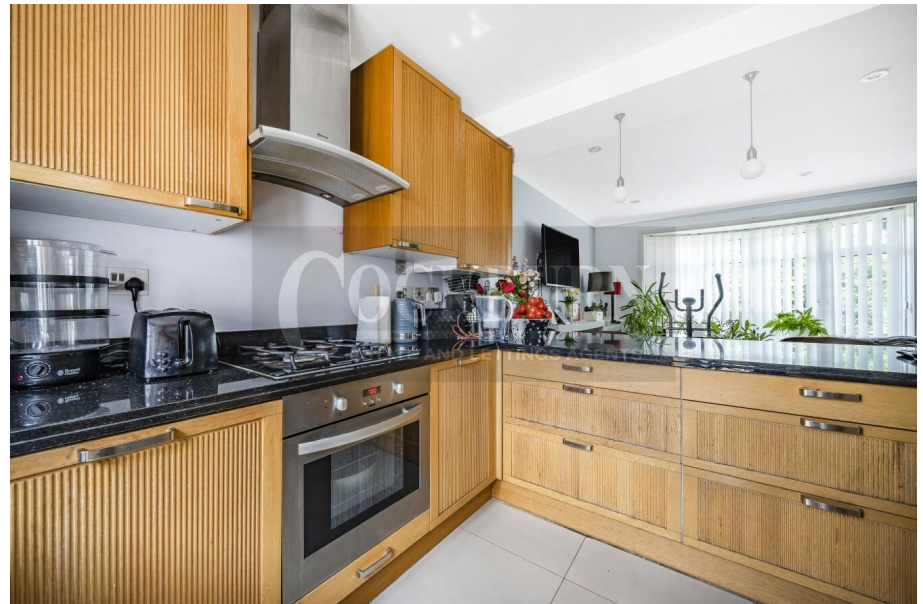
£400,000

🛏️ 4 🚿 1 🚗 1



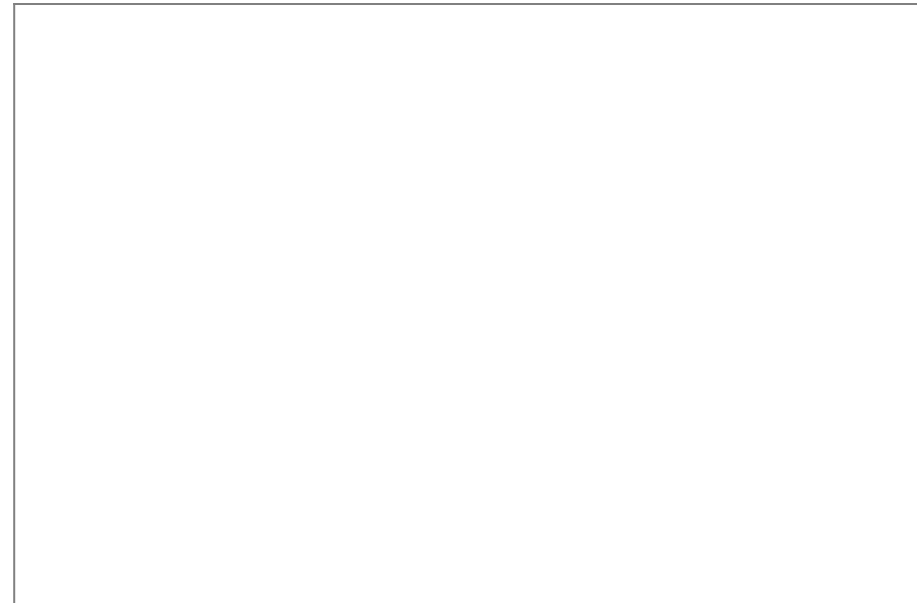
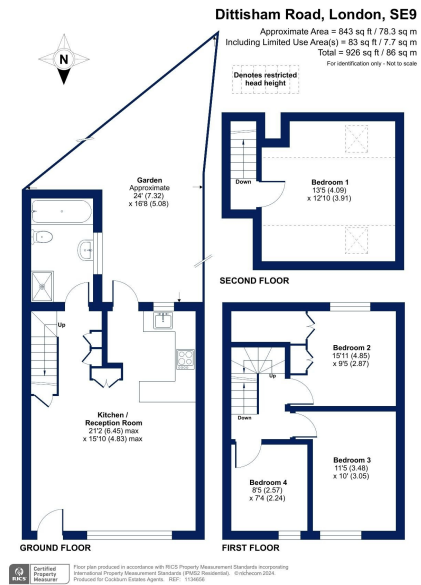
- Chain Free Sale
- Four Bedrooms
- Fourth Bedroom Loft Conversion
- Large Open Plan Reception/ Kitchen Area
- Well Maintained Garden To Rear
- Off Street Parking
- Ideally Located For Elmstead Woods, Mottingham & Grove Park Railway Stations
- Excellent Bus Links Keeping You Connected With Mottingham, Chislehurst & Bromptley
- Perfect For First Time Buyers
- Council Tax Band C - London Borough Of Bromley





\*\*\* CHAIN FREE \*\*\*

Cockburn are excited to present to the market this wonderful four bedroom terraced family home on the ever popular Dittisham Road!



**Cockburn EA**

352 Footscray Road,  
London, SE9 2EB

t: 020 8859 8590