



SCAN ME

**Apartment**

**Beds 1, Baths 1, Lounges 1**



**Hepple Close, Isleworth, TW7**

**£250,000 Leasehold**





## Property Description

### Property Description

A second floor apartment set on a private road off Park Road in Old Isleworth. Features include 955 yr + lease, allocated parking space, landscaped communal gardens, near Syon Lane Train as well as Syon park and Old Isleworth Riverside.

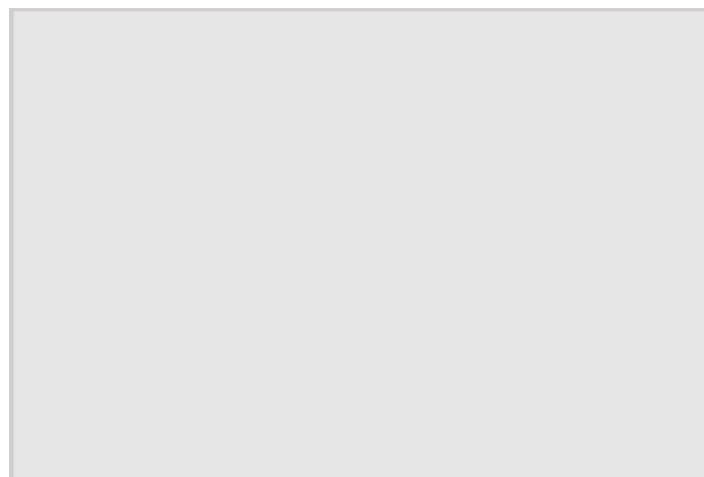
### Accommodation

The accommodation comprises building entrance with secure entry phone system leading to into communal hallway with stairs to flat. Front door into a long 'L' hallway which has an airing cupboard and a deep storage cupboard. From there you have good size lounge with electric storage heater and carpeted floors. Extensive fitted kitchen along three walls with built appliances, oak effect worktops, wooden flooring and large opening to lounge. Bedroom with large built in cupboard. Finally there is a three piece bathroom which is fully tiled to two walls and has access to a utility room housing a washing machine.



### Outside Areas

To the outside the property benefits from beautifully kept landscaped communal



gardens all around, there is also allocated parking in a courtyard outside.

### **Transport Links & Nearby**

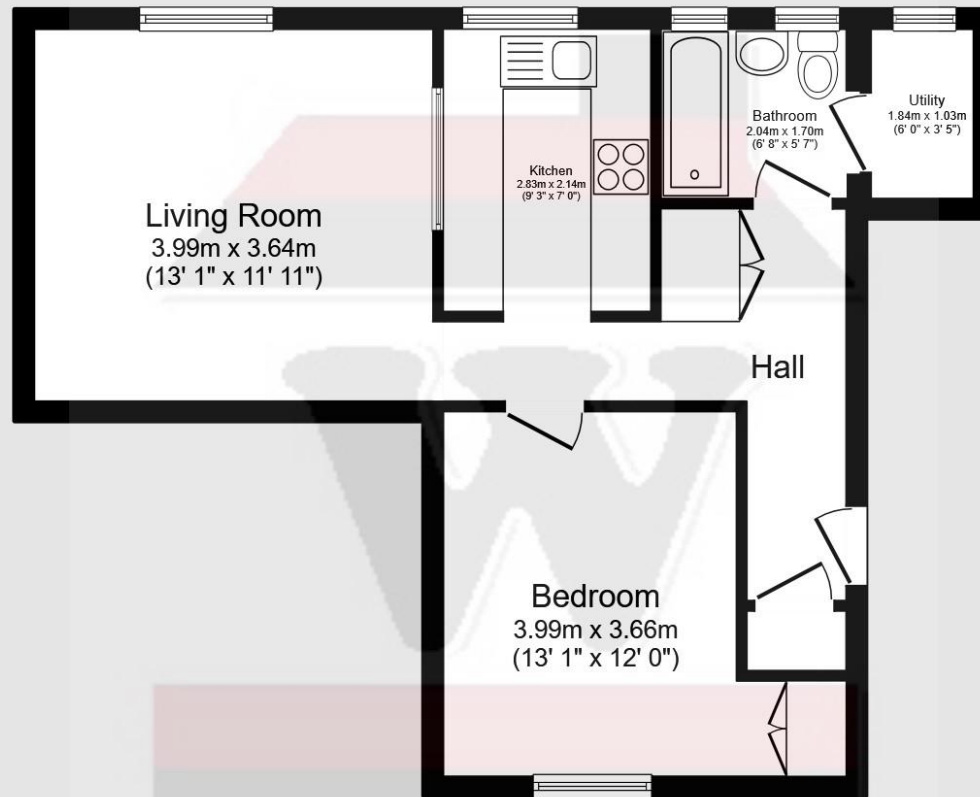
Set a quiet road off Park Road you are within walking distance of Syon Lane National Rail nearby whilst the grounds at Syon Park and Old Isleworth Riverside are a short walk away. Finally Brentford and Hounslow Town Centres area short bus journey away as well as the shops at Isleworth Village.

### **Additional Information**

Property: Tenure – Leasehold, Lease length 957 years unexpired. Ground Rental £NIL per annum. Service charge £1942.44 per annum. Measuring approx. 514 sqft/47.8 sqm. Council Tax - Band C (London Borough of Hounslow) £1770 per annum. EPC rating - E.



# Hepple Close, Isleworth, TW7



## Floor Plan

Floor area 47.8 sq.m. (514 sq.ft.)

TOTAL: 47.8 sq.m. (514 sq.ft.)

This floor plan is for illustrative purposes only. It is not drawn to scale. Any measurements, floor areas (including any total floor area), openings and orientations are approximate. No details are guaranteed, they cannot be relied upon for any purpose and do not form any part of any agreement. No liability is taken for any error, omission or misstatement. A party must rely upon its own inspection(s). Powered by [www.Propertybox.io](http://www.Propertybox.io)



**Woodlands Estates,**  
16 St Johns Road, Isleworth,  
Middlesex, TW7 6NW

[www.woodlandsestates.com](http://www.woodlandsestates.com)  
020 8560 3228  
[mail@woodlandsestates.com](mailto:mail@woodlandsestates.com)

Agents Note: Whilst every care has been taken to prepare these sales particulars, they are for guidance purposes only. All measurements are approximate are for general guidance purposes only and whilst every care has been taken to ensure their accuracy, they should not be relied upon and potential buyers are advised to recheck the measurements.

Follow us on Social Media

