

Holly Dene, Armthorpe, Doncaster, DN3

Offers In Region Of £175,000

🛏 2 🚗 1 🚗 1



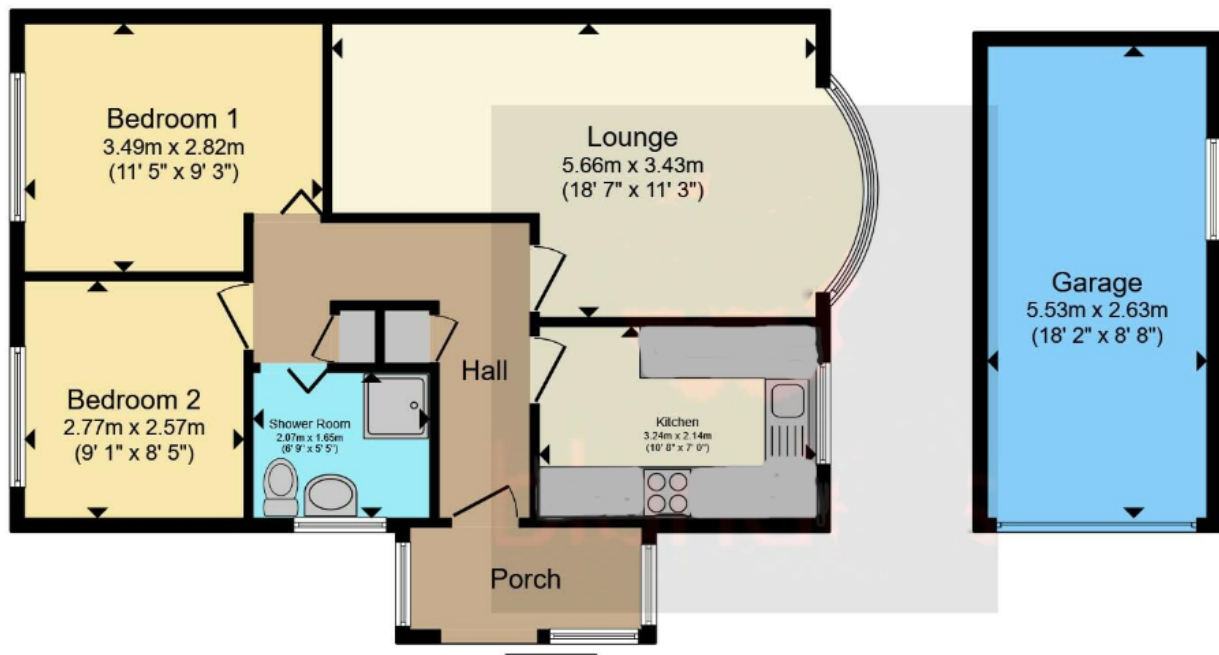
Located on a SPACIOUS CORNER PLOT. A Must See. NO CHAIN

This spacious corner plot property boasts a newly decorated interior, offering a fresh and inviting atmosphere complemented by brand new carpets throughout. The bungalow features a well-appointed bathroom complete with a convenient shower cubicle, while the fitted kitchen provides a functional and stylish space for culinary creations.

Adding to its allure, this property includes a detached garage with a driveway, providing ample parking space for multiple vehicles.

Key Features

- QUOTE SH0316 WHEN CALLING
- EXCELLENT PUBLIC TRANSPORT LINKS
- CLOSE PROXIMITY TO LOCAL AMENITIES
- DETACHED GARAGE WITH A GOOD SIZE DRIVEWAY
- SITUATED ON A SPACIOUS CORNER PLOT
- LOCATED IN A POPULAR DESIRABLE AREA
- EXCELLENT MOTORWAY LINKS TO M18/A1/M1
- HARD STAND FOR A CARAVAN OR ADDITIONAL PARKING
- NEWLY DECORATED THROUGHOUT & CARPETED
- BEAUTIFULLY PRESENTED DETACHED BUNGALOW



Floor Plan

Garage