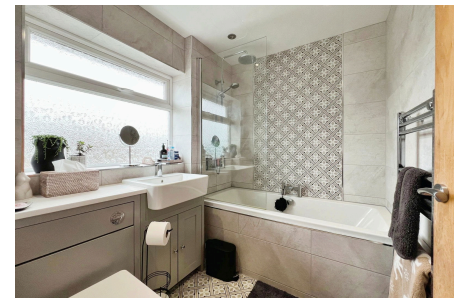


Leyfield Court, Armthorpe, Doncaster, DN3 3LF

Offers In Region Of £220,000

🛏 3 🚿 1 🚗 1



A CHARMING semi-detached DORMER BUNGALOW with a BLEND of CHARACTER and MODERN appeal. NO ONWARD CHAIN.

Presenting for sale, a neutrally decorated, semi-detached dormer bungalow. This stunning property is located in a cul de sac renowned for its peaceful, quiet atmosphere, and proximity to local amenities, public transport links, and green spaces.

With a council tax band of B and an EPC rating of D, this property is economically friendly, making it an ideal choice for families and couples alike.

Key Features

- IDEAL FOR FAMILIES OR COUPLES
- CHARMING 3 BEDROOM DORMER BUNGALOW
- LOCATED IN A PEACEFUL & QUIET CUL DE SAC
- MODERN LIGHT FILLED KITCHEN DINER
- SPACIOUS OPEN PLANNED LOUNGE THROUGH DINING ROOM
- ADDITIONAL STORAGE IN DORMER
- LARGE DRIVEWAY TO FRONT AND SIDE
- DETACHED GARAGE WITH WORKSHOP
- GOOD PUBLIC TRANSPORT LINK & MOTORWAY LINKS M18/A1/M1
- TENURE FREEHOLD. EPC RATING D. COUNCIL TAX BAND B

