

Rectory Way, Yatton

£365,000

4 1 2

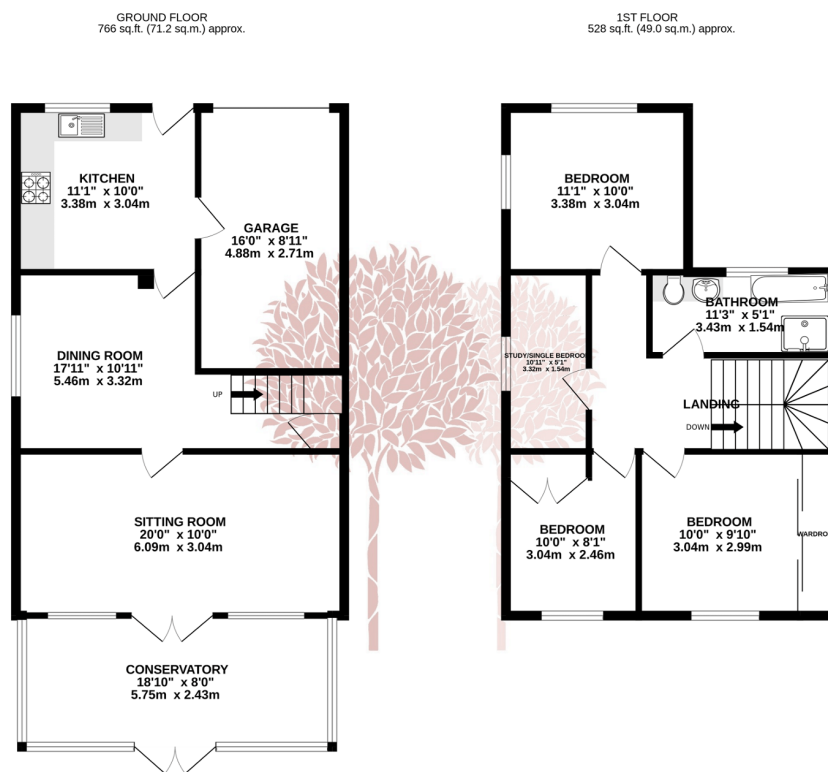


PERFECT FAMILY HOME- This well presented four bedroom family homes occupies a lovely position, set back from the road and backing onto local playing fields. Extended and improved by the current owners it has an integrated garage, ample parking and a lovely conservatory.



Key Features

- Extended and improved semi detached home
- Four bedrooms
- Light and airy sitting room, separate dining/family room and conservatory
- Hobby room in the loft
- Backwell School and 6th Form catchment
- Superb convenient village position backing onto playing fields
- Integral garage and ample off street parking
- Pretty front and rear garden
- Gas central heating and double glazing
- EPC D Council Tax Band B



TOTAL FLOOR AREA: 1294 sq.ft. (120.2 sq.m.) approx.
Whilst every attempt has been made to ensure the accuracy of the floorplan contained here, measurements of doors, windows, rooms and any other items are approximate and no responsibility is taken for any error, omission or mis-statement. This plan is for illustrative purposes only and should be used as such by any prospective purchaser. The services, systems and appliances shown have not been tested and no guarantee as to their operability or efficiency can be given.
Made with Metropix ©2024

