

# debbie fortune

ESTATE AGENTS

## Birch Drive, Langford

£450,000

🛏️ 4 🚿 2 🚗 1

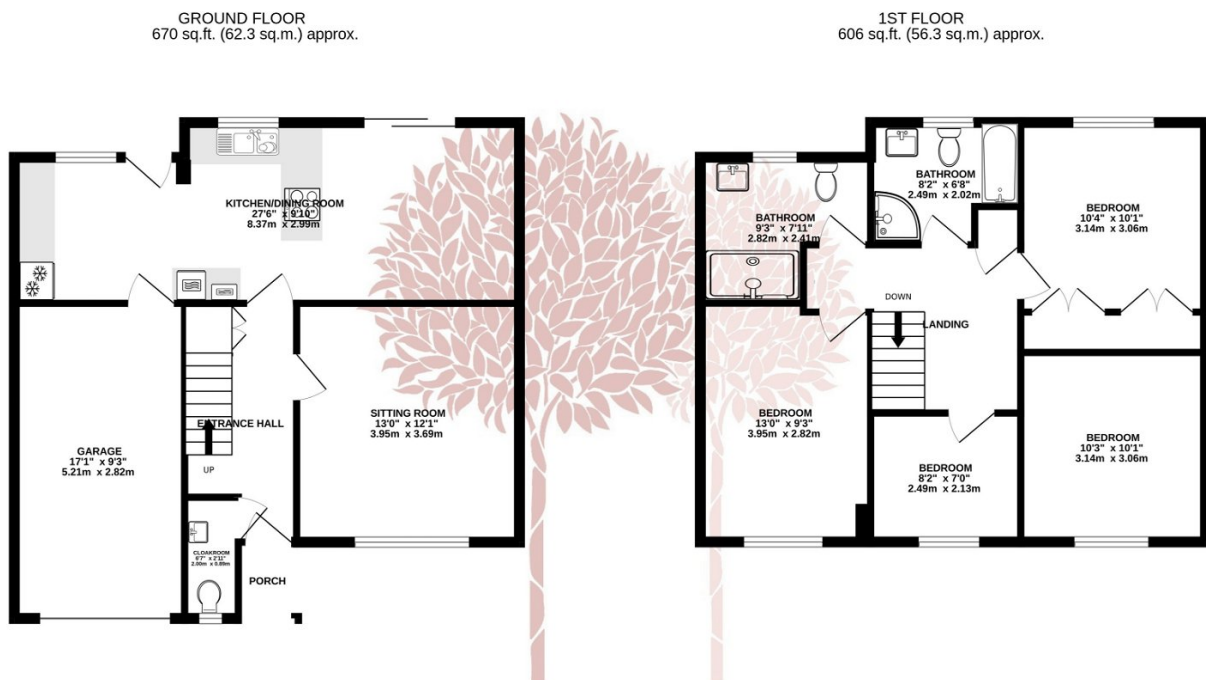


A much improved detached family home, offering a refined modern interior with four beautifully appointed bedrooms, two contemporary bathrooms, an impressive 27' kitchen/dining room and a smart light filled living room. This property has an integrated single garage, off street parking and a lovely private rear garden situated within a cul-de-sac setting.



## Key Features

- Superb Four bedroom detached home
- Fantastic condition throughout
- Superb contemporary Kitchen/Dining Room
- Single garage and off street parking
- Gas central heating and double glazing
- Two well appointed bathrooms
- Excellent location for local schools and amenities
- EPC Rating - C
- South facing garden



TOTAL FLOOR AREA: 1276 sq.ft. (118.6 sq.m.) approx.

Whilst every attempt has been made to ensure the accuracy of the floorplan contained here, measurements of doors, windows, rooms and any other items are approximate and no responsibility is taken for any error, omission or mis-statement. This plan is for illustrative purposes only and should be used as such by any prospective purchaser. The services, systems and appliances shown have not been tested and no guarantee as to their operability or efficiency can be given.  
Made with Metropix ©2023

