

Front Street, Churchill

£550,000

🛏 3 🚿 2 🛋 2



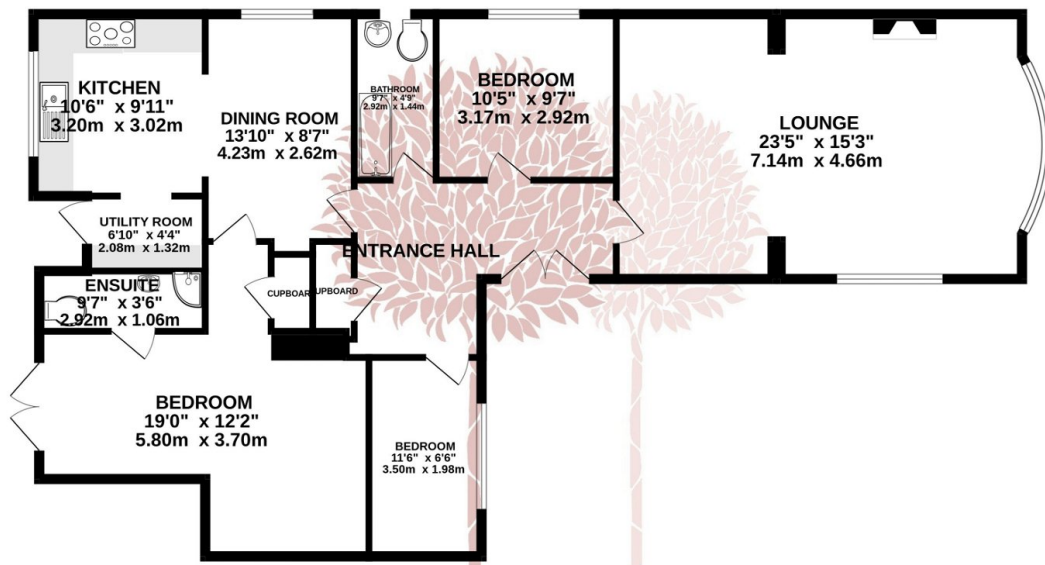
DETACHED BUNGALOW WITH NO ONWARD CHAIN An absolutely beautifully appointed three bedroom detached bungalow set on popular Front Street in Churchill. Much improved over recent years the property has a generous gardens to both the front and rear, plenty of parking plus a large garage, and a wonderfully homely interior.



Key Features

- Beautifully appointed detached bungalow
- Stunning sitting room with cast iron multifuel burner
- Private rear garden
- No onward chain complications
- Council Tax Band E
- Three bedrooms and two well appointed bathrooms
- Wonderful village location
- Garage/workshop plus plenty of off street parking
- EPC D

GROUND FLOOR



Whilst every attempt has been made to ensure the accuracy of the floorplan contained here, measurements of doors, windows, rooms and any other items are approximate and no responsibility is taken for any error, omission or mis-statement. This plan is for illustrative purposes only and should be used as such by any prospective purchaser. The services, systems and appliances shown have not been tested and no guarantee as to their operability or efficiency can be given.
Made with Metropix ©2024

