

## The Causeway, Congresbury

Guide Price £600,000

🛏 4 🚗 2 🛋 3



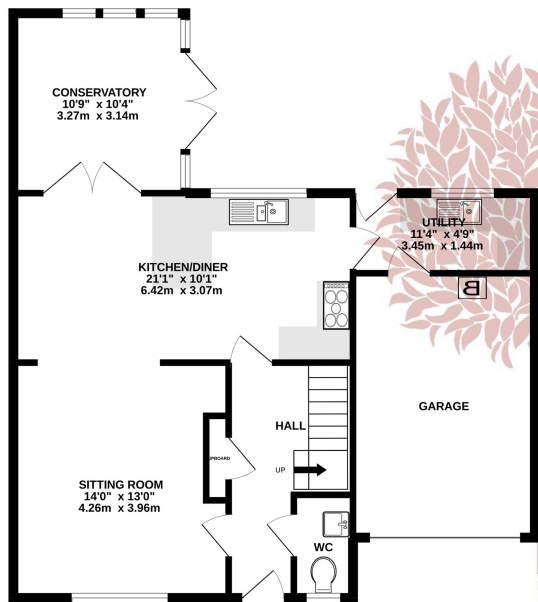
**EXCELLENT DETACHED HOUSE-** Occupying a wonderful position on one of Congresbury most popular roads, this modern detached home is perfect for buyers who want to enjoy the excellent local amenities, with easy access to the Strawberry Line and numerous recreation clubs. EPC rating C.



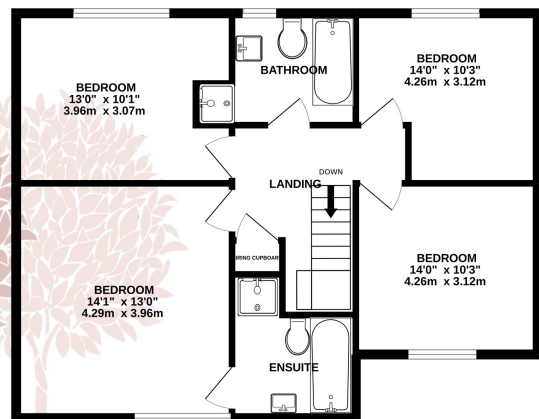
## Key Features

- Superb elevated detached family home
- Convenient central village location
- Attractive sitting room with fabulous feature fireplace
- Four double bedrooms (Master en-suite)
- Lovely views to the rear over Congresbury Cricket Club
- Large integrated garage and ample parking
- Private south west facing garden
- Well-appointed kitchen/breakfast with access to a Conservatory
- Family bathroom
- EPC C

GROUND FLOOR



1ST FLOOR



TOTAL FLOOR AREA: 1541sq.ft. (143.2 sq.m.) approx.

Whilst every attempt has been made to ensure the accuracy of the floorplan contained here, measurements of doors, windows, rooms and any other items are approximate and no responsibility is taken for any error, omission or mis-statement. This plan is for illustrative purposes only and should be used as such by any prospective purchaser. The services, systems and appliances shown have not been tested and no guarantee as to their operability or efficiency can be given.

Made with Metropix ©2022

