

Hollow Road, Shipham

£499,950

3 1 3



CHARACTER COTTAGE A quintessential chocolate box cottage situated in the heart of the popular Mendip Village of Shipham. This beautifully appointed and utterly charming character home has a lovely homely interior packed with original period details which have been further enhanced by quality modern refinements.

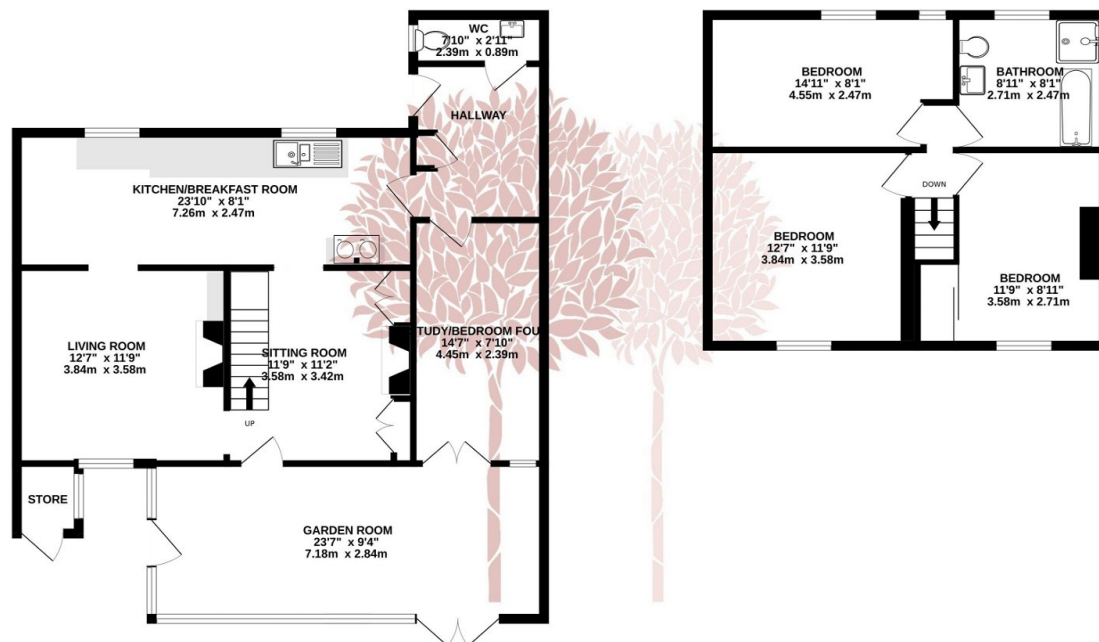


Key Features

- Gorgeous Chocolate box cottage in the heart of the village
- Reputed to be one the oldest houses in Shipham
- Three double bedrooms
- Three characterful reception room
- Lovely garden Room
- 26' kitchen/breakfast room
- Beautiful family bathroom with walk in shower and clawfoot bath
- Off street parking
- Ground floor cloakroom, plus outside gardeners W.C
- Council Tax Band B EPC D

GROUND FLOOR
906 sq.ft. (84.1 sq.m.) approx.

1ST FLOOR
458 sq.ft. (42.6 sq.m.) approx.



TOTAL FLOOR AREA: 1364 sq.ft. (126.7 sq.m.) approx.

Whilst every attempt has been made to ensure the accuracy of the floorplan contained here, measurements of doors, windows, rooms and any other items are approximate and no responsibility is taken for any error, omission or mis-statement. This plan is for illustrative purposes only and should be used as such by any prospective purchaser. The services, systems and appliances shown have not been tested and no guarantee as to their operability or efficiency can be given.

Made with Metropix ©2024

