



# The Maple

4 bedroom home

[bovishomes.co.uk](http://bovishomes.co.uk)

**Bovis  
Homes** 

# The Maple

## 4 bedroom home

Ground floor	metres	feet / inches
Kitchen	3.81 x 3.50	12' 6" x 11' 6"
Family / dining area	7.29 x 3.03	23' 11" x 9' 11"
Sitting room	4.51 x 3.50	14' 9" x 11' 6"
Study	2.50 x 2.29	8' 3" x 7' 6"

### First floor

Bedroom 1	6.58 x 3.50	21' 6" x 11' 6"
Bedroom 2	3.69 x 3.57	12' 1" x 11' 8"
Bedroom 3	4.17 x 2.90	13' 8" x 9' 6"
Bedroom 4	2.95 x 2.90	9' 8" x 9' 6"

### The Maple | X416 01 BB1020 |

This floorplan has been produced for illustrative purposes only. Room sizes shown are between arrow points as indicated on plan. The dimensions have tolerances of + or -50mm and should not be used other than for general guidance. If specific dimensions are required, enquiries should be made to the sales consultant.

ovn	oven	cyl	hot water cylinder
h	hob	w	wardrobe
dw	dishwasher	cup'd	cupboard
ws	washing machine space	◀ ▶	measuring points
ffzr	fridge freezer		

Please refer to the sales consultant for specific plot details as the illustrations shown are computer generated impressions of how the property may look so are indicative only. External details or finishes may vary on individual plots and homes may be built in either detached or attached styles depending on the development layout. Exact specifications, window styles and whether a property is left or right handed may differ from plot to plot.

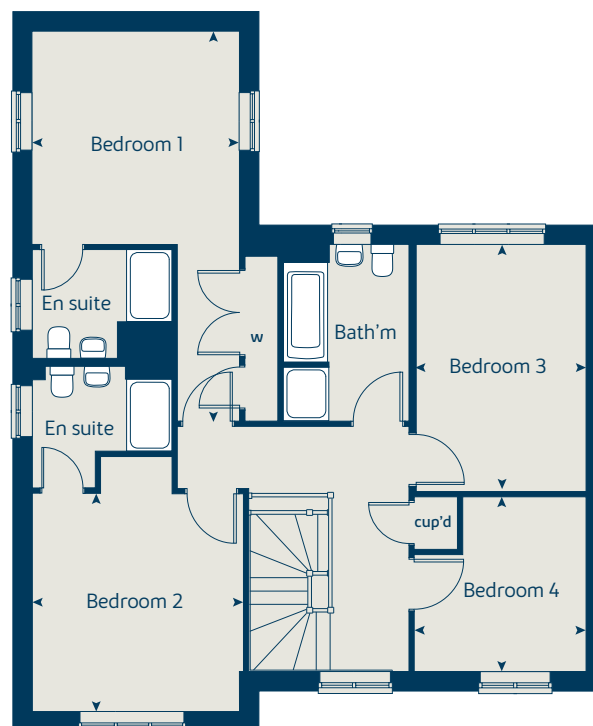
The floorplans shown are not to scale. Measurements are based on the original drawings. Slight variations may occur during construction.

Produced by the Vistry Group Design Studio.

When you have finished with this leaflet please recycle it.

BB1020 DS02054 / 07.22

### First floor



### Ground floor

