

Knapps Close, Winscombe

Guide Price £795,000

🛏️ 4 🚿 3 🛋️ 4

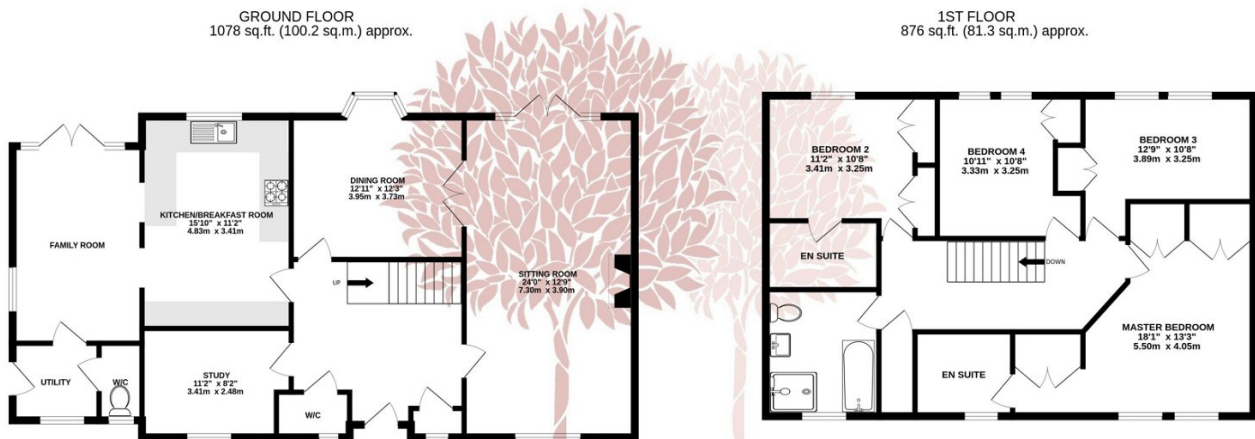


SUPERB DETACHED FAMILY HOME IN WINSCOMBE - This four bedroom detached family home is set in one of the villages most exclusive addresses with a private driveway and double garage.



Key Features

- Beautifully appointed detached family home
- Extremely close to village amenities and 'Strawberry Line'
- 4 bedrooms, two ensuite
- Utility room and cloakroom
- Plenty of off street parking, double garage
- Set in a sought after cul-de-sac
- Well-proportioned rooms
- Study
- Stunning front and rear gardens
- EPC



TOTAL FLOOR AREA: 1954 sq.ft. (181.5 sq.m.) approx.

Whilst every attempt has been made to ensure the accuracy of the floorplan contained here, measurements of doors, windows, rooms and any other items are approximate and no responsibility is taken for any error, omission or mis-statement. This plan is for illustrative purposes only and should be used as such by any prospective purchaser. The services, systems and appliances shown have not been tested and no guarantee as to their operability or efficiency can be given.
Made with Metropix ©2024

