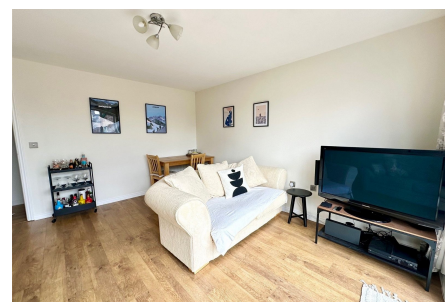


Weston Road, Long Ashton

£325,000

🛏 3 🍴 2 🚿 1



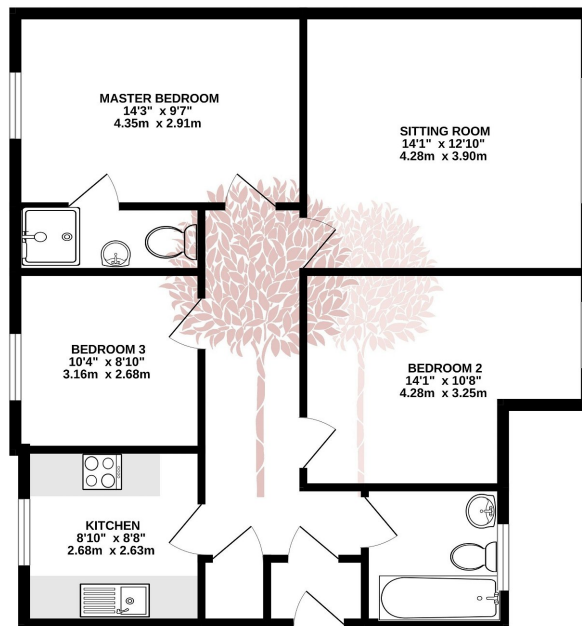
A three bedroom spacious flat situated in a highly convenient location with a contemporary interior and off street parking.



Key Features

- A contemporary three-bedroom flat
- En-suite to the master bedroom
- Superb location for commuting into Bristol
- Council Tax band B
- Viewing Advised
- Bright and spacious reception room with feature window
- Off street parking
- Perfect for first time buyers
- Energy Efficiency Rating C
- Leasehold First Floor Flat

GROUND FLOOR
807 sq.ft. (75.0 sq.m.) approx.



TOTAL FLOOR AREA: 807 sq.ft. (75.0 sq.m.) approx.
Whilst every attempt has been made to ensure the accuracy of the figures contained here, measurements of doors, windows, rooms and any other items are approximate and no responsibility is taken for any error, omission or mis-statement. This plan is for illustrative purposes only and should be used as such by any prospective purchaser. The services, systems and appliances shown have not been tested and no guarantee as to their operability or efficiency can be given.
Made with Metroplan (2024)

