

Cranford Drive, Hayes

Guide Price £290,000

2 1 1

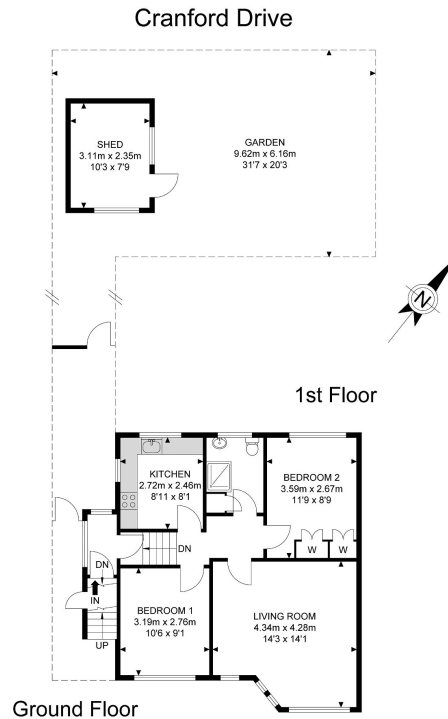


TWO BEDROOM - FIRST FLOOR - MAISONETTE - PRIVATE GARDEN - CHAIN FREE

Henry Wiltshire are pleased to present this well maintained two bedroom first floor maisonette property which benefits double bedrooms, separate kitchen, living room, double glazed PVC windows, gas heating, private garden at the rear, boarded loft which is ideal for storage and also has the potential for a extension STPP. Leasel to be extended upon completion.

Ideal for investors and first time buyers alike so contact a member of staff now for more details.

- Two Bedrooms
- First Floor
- Maisonette
- Private Rear Garden
- Leasehold
- Chain Free
- Lease to be extended upon completion
-
-



APPROX. GROSS INTERNAL FLOOR AREA 562.95 SQ FT / 52.30 SQM
APPROX. GROSS EXTERNAL FLOOR AREA 981.66 SQ FT / 91.20 SQM

Whilst every attempt has been made to ensure the accuracy of the floor plan contained here, measurements of doors, windows, rooms and any other items are approximated and no responsibility is taken for any error, omission or misstatement. This plan is for illustrative purposes only and should be used as such by any prospective purchaser. The service, system and appliances shown have not been tested and no guarantee as to their operability or efficiency can be given.

© SpacePhoto
Photography and Floor Plan