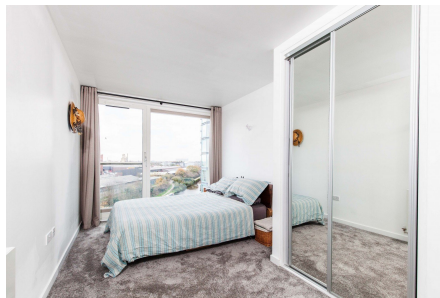


Flat 307, Cardinal Building, Station Approach, Hayes, UB3

Guide Price £350,000

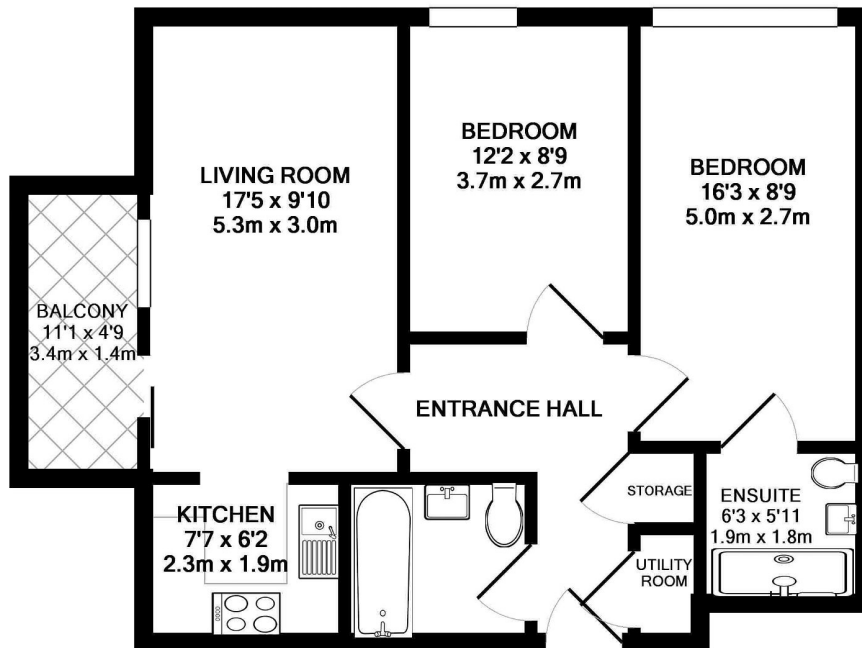
2 2 1



High Point Village has been created to meet the needs of 21st Century living, an urban village by the Grand Union Canal - Hayes. The development sets standards for style and quality in urban living with advanced ergonomics and generous space maximising green and open space. It features four interconnected landscaped gardens with raised lawns, a water feature and places to relax, a public square for events, retail and out-door dining, play area for children and canal side walkway. With fine points including a 24hr concierge and gymnasium with swimming pool and dance studio.

Key Features

- Two Bedroom
- Two Bathroom
- Balcony
- Parking
- Concierge
- Gym
- Swimming Pool
- Leasehold
- Chain Free
- Bash Buyers



TOTAL APPROX. FLOOR AREA 637 SQ.FT. (59.1 SQ.M.)

Whilst every attempt has been made to ensure the accuracy of the floor plan contained here, measurements of doors, windows, rooms and any other items are approximate and no responsibility is taken for any error, omission, or mis-statement. This plan is for illustrative purposes only and should be used as such by any prospective purchaser. The services, systems and appliances shown have not been tested and no guarantee as to their operability or efficiency can be given
Made with Metropix ©2018