

Napier House, Bromyard Avenue, London, W3 7FL

Guide Price £325,000

1 1 1



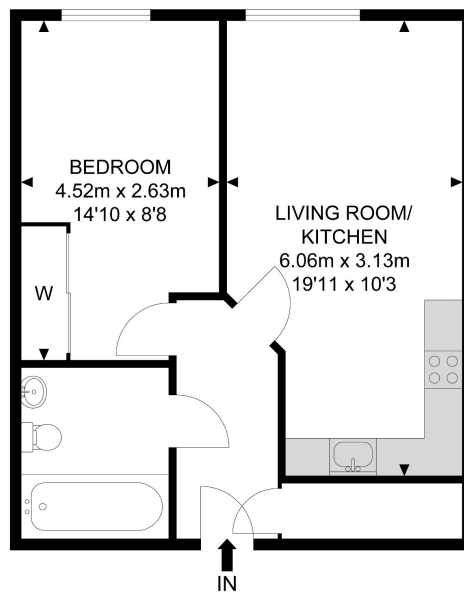
ONE BEDROOM - GATED DEVELOPMENT - 24 HR CONCIERGE - LONG LEASE - CHAIN FREE

Henry Wiltshire are pleased to present this 1 bed modern apartment located within Napier House which is a prestigious gated development. This apartment consists of one double bedrooms, modern family bathroom, open plan kitchen/living area and Juliet balcony. The property also benefits from lift access, double glazing, ample storage space, and 24 hour concierge service.

Located just 0.7 miles to East Acton, Underground, and 0.8 miles to Acton Central this property is ideal for both investors, first time buyers, and professional couples alike.

- One Bedroom
- Gated Development
- Lift Access
-
-
-
- Wooden Flooring
- 24 hour Concierge
-
-
-

Napier House



1st Floor



APPROX. GROSS INTERNAL FLOOR AREA 434.86 SQ FT / 40.40 SQM

Whilst every attempt has been made to ensure the accuracy of the floor plan contained here, measurements of doors, windows, rooms and any other items are approximated and no responsibility is taken for any error, omission or mis-statement. This plan is for illustrative purposes only and should be used as such by any prospective purchaser. The service, system and appliances shown have not been tested and no guarantee as to their operability or efficiency can be given.

© SpacePhoto

Photography and Floor Plan