



Hamstall Close, Streethay

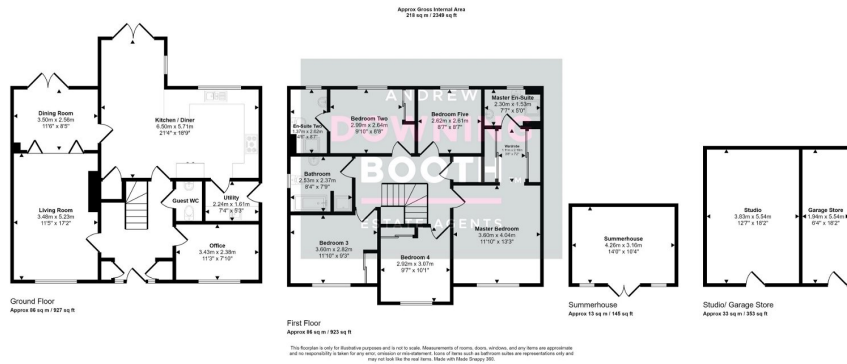
£750,000

5 3 3



This impeccably presented property can only be described as the perfect family home. This five bedroom home in the highly desired village of Streethay, boasts a seemingly endless list of attractive features; from the five large bedrooms, located in a quiet cul-de-sac, through to the impeccable presentation from top to bottom. With spacious accommodation throughout, the ground floor comprises an impressive entrance hall, large living room leading through to the dining room with doors opening out to the garden, in turn leading through to a stunning breakfast kitchen/diner with a utility off. There is also a guest WC and home office, both accessed via the entrance hall. To the first floor are the five bedrooms, all of which are doubles (two with en-suites, the Master with a walk-in wardrobe) and the main family bathroom. A large detached double garage has been converted into a flexible use studio perfect for a home gym, games room ETC, however this could be easily converted back for garage use. A beautiful summerhouse sits to the rear of the landscaped, good size rear garden, providing a wonderful escape and alternative place to relax. Just when you thought it couldn't get any better, there is also the addition of a built in bar providing the perfect place to entertain during the warm summer nights. It must be emphasised what a truly impeccable family home this property is. A property of this criteria can only be truly appreciated in full when visited in person, so booking in a viewing is thoroughly advised.





- Five Double Bedroom Substantial Detached Property
- Fabulous Summerhouse & Bar
- Impressive Breakfast Kitchen/Diner
- EPC Rating: B
- Immaculately Presented Throughout
- Detached Double Garage / Studio
- Highly Sought After Location
- Council Tax: G

