



ANDREW
DOWNING
BOOTH™
ESTATE AGENTS

Tye Road, Fradley, Lichfield

£230,000

🛏️ 2 🚿 1 🚗 1

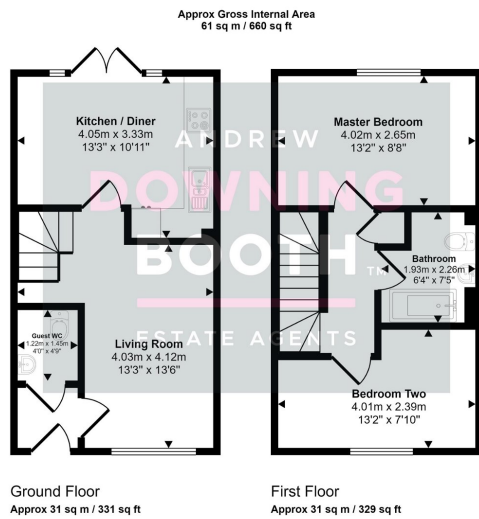


A beautifully presented and spacious two double bedroom home in a very popular location. For this particular price bracket, you'd be forgiven for expecting significant compromise, whether that be room sizes, general presentation or location, but this stunning property in Tye Road of Fradley, Lichfield, comes to the market with an extensive range of attractive features, from the exceptional presentation throughout, to the fabulous kitchen/diner, and convenient location.

Fradley is always popular and is only becoming more and more so, with a wide range of amenities easily accessible, including gyms, eateries, scenic walks and the availability of a short drive to Lichfield and other areas via the A38. The accommodation is set across two floors, with an entrance hall, attractive living room, full width kitchen/diner and guest WC all to the ground floor whilst the two double bedrooms and stunning bathroom occupy the first. A charming frontage boasts a driveway whilst a low maintenance garden sits to the rear.

Ample space, exceptional presentation and the location to match; a viewing is essential to appreciate all that's on offer for such a truly impressive price.





This floorplan is only for illustrative purposes and is not to scale. Measurements of rooms, doors, windows, and any items are approximate and no responsibility is taken for any error, omission or mis-statement. Icons of items such as bathroom suites are representations only and may not look like the real items. Made with Made Snappy 360.

- Two Double Bedroom Terraced Property
- Consistently Beautifully Presented Throughout
- Stunning Bathroom
- Driveway & Low Maintenance Garden
- Very Popular Location, Close To Amenities
- Generous Living Room & Kitchen/Diner
- EPC Rating: B
- Council Tax Band: B

