



## GERVASE DRIVE, Dudley, DY1 4AT

Offers In Region Of £469,950

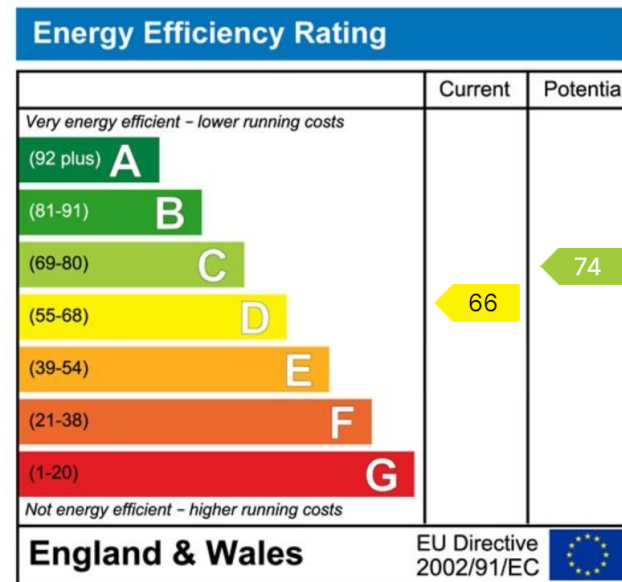
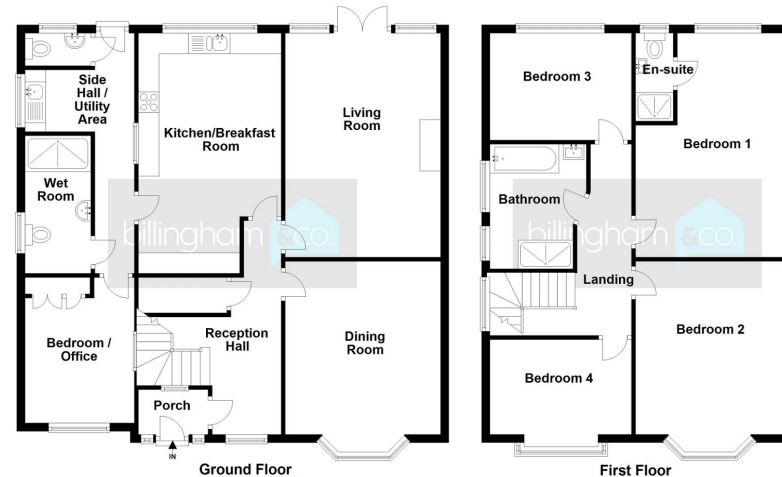
🛏 5 🚿 2 🚗 2

- Period style four/five bedroom Detached family home.
- Located close to Dudley Castle & Priory Ruins and local amenities.
- Four Bedrooms to the first floor, Ensuite Shower Room and a Family Bathroom.
- Off road parking and a good sized Rear Garden.
- EPC Rating D.
- Occupying this pleasant tree lined residential street.
- Two spacious Reception Room, Modern Refitted Kitchen.
- Conversion to the side, providing an additional Bedroom/Office, Wet Room, Utility Area and a Storage room. ~~Early viewing is strongly advised.~~



A beautifully presented FOUR / FIVE BEDROOM period style Detached Family home, occupying this prime location within this tree lined road close to Dudley Castle & Priory Ruins and local amenities. Providing versatile living accommodation, having two reception rooms, a stunning Dining Kitchen, Four Bedrooms to the first floor and benefiting from a well planned conversion to the ground floor, to include an additional Bedroom/Office, Wet Room and a Utility Area. To the Rear is a good sized Garden. An early viewing is essential to appreciate the standard of living accommodation on offer.





Sales 01384 444 004 / Lettings 01384 445 075  
 hello@billingham.properties  
 www.billingham.properties



Agents Note: Whilst every care has been taken to prepare these particulars, they are for guidance purposes only. All measurements are approximate and are for general guidance purposes only and whilst every care has been taken to ensure their accuracy, they should not be relied upon and potential buyers are advised to recheck the measurements.