

Station Road, Spooner Row, NR18

Offers In Region Of £340,000

3 2 2



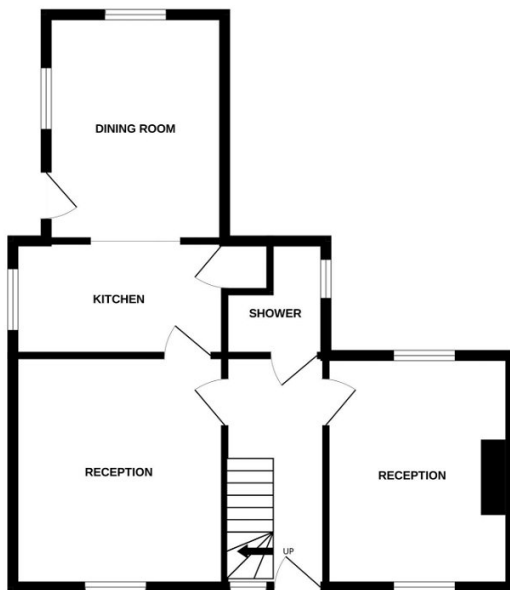
Moneyproperties are thrilled to be marketing this spacious three-bedroom semi-detached family home located in the popular village of Spooner Row with easy access to the A11 for commuting towards Norwich, Cambridge, and London. The property sits on a generous 91ft x 60ft plot with a good-sized patio area. The accommodation comprises of an entrance hall, two versatile reception rooms, kitchen, separate dining area and downstairs shower room. Three double bedrooms and a family bathroom off the landing. Close proximity to Wymondham College, local primary school, village public house along with the towns of Wymondham and Attleborough.

Tenure: Freehold EPC: E Council Tax: B

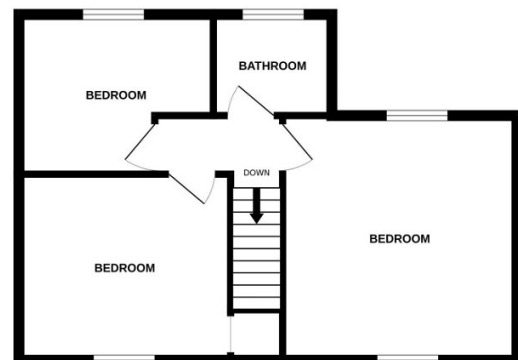
Key Features

- Spacious three double bedroom family home
- Two versatile reception rooms with an open plan kitchen/diner
- Within ease of access to the A11 for commuting towards Norwich, Cambridge and London
- Close proximity to Wymondham College, local primary school and public house
- Ideally positioned for access to local market towns of Wymondham and Attleborough
- Semi-detached house sitting on a generous 91ft x 60ft plot stms
- Downstairs shower room with upstairs bathroom
- Generous wrap around garden with good-sized patio area
- Off-road parking
- Freehold, Council tax band B, EPC rating E

GROUND FLOOR



1ST FLOOR



Whilst every attempt has been made to ensure the accuracy of the floorplan contained here, measurements of doors, windows, rooms and any other items are approximate and no responsibility is taken for any error, omission or mis-statement. This plan is for illustrative purposes only and should be used as such by any prospective purchaser. The services, systems and appliances shown have not been tested and no guarantee as to their operability or efficiency can be given.
Made with Metropix ©2024