



HEARTWOOD
HOMES

Maryland Place, St. Albans, AL3 5FD

£112,500

🛏️ 2 🚿 1 🚻 1



A beautifully presented first floor shared ownership apartment with the option to purchase 25% to 75%. Built on the site of a former Convent, Maryland Place enjoys a quiet setting off Townsend Drive just north of St Albans and is an exclusive development for the over 55s

This stunning home offer generous accommodation, starting in the entrance hall which provides access to the large utility cupboard. There is a size dual aspect living/dining room with a Juliette balcony overlooking the attractive grounds and the modern fitted kitchen is open plan adjacent to the dining area. Furthermore there are two generous bedrooms and a lovely bathroom.

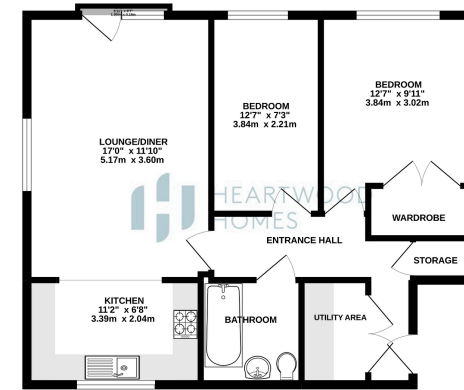
The development is still under the new build warranty and is set in attractive communal gardens and with the benefit of allocated parking. EPC Grade B





HEARTWOOD HOMES

1ST FLOOR
654 sq.ft. (60.7 sq.m.) approx.



TOTAL FLOOR AREA: 654 sq ft (60.7 sq m) approx.
While every effort has been made to ensure the accuracy of the floor plan, measurements of actual spaces may vary slightly from those shown. Dimensions are approximate and do not include wall thicknesses. The seller, agent and developer accept no liability for any errors or omissions. The floor plan is for illustrative purposes only and does not constitute an offer of any property.



HEARTWOOD HOMES



HEARTWOOD HOMES